



Application Specific Regenerative Blowers

Specialty blowers for Commercial Spa, High Temperature, Natural Gas, and Gasoline Vapor Recovery applications.

Our industrial NC (Nautilair™ Centraxial) blowers include:

- Fiberglass or aluminum housing
- Aluminum impellers
- Permanently sealed bearings for 50,000 hours life

Our instrument grade and variable flow SE (Minispiral™ Regenerative) blowers include:

- AC and DC versions available for world voltages and maximum flow variability
- Glass filled molded phenolic impeller; aluminum and phenolic case
- 30,000 hour bearing life
- Small size and lightweight construction
- Quiet to NC-47 office equipment standards

Our instrument grade SL (Spiral Regenerative) blowers include:

- Rugged diecast aluminum housing, endbells, and impellers
- Compact size with encased muffler for maximum noise reduction
- Low amp draw with highly efficient motor
- Permanently sealed bearings for 40,000 hours life
- Hermetically sealed models designed for glovebox use



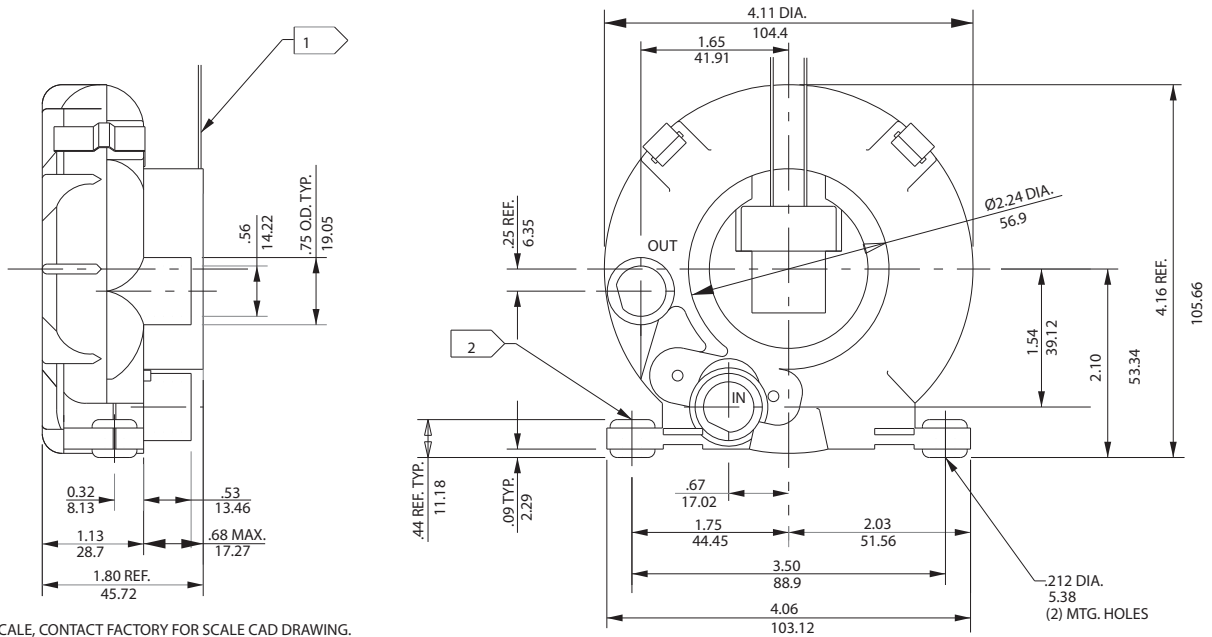
ROTRON®

Application Specific Blowers

Minispiral

Instrument Grade Regenerative Blower

ROTRON®



IN
MM

NOTES

- 1 DRAWING NOT TO SCALE, CONTACT FACTORY FOR SCALE CAD DRAWING.
- 2 CONTACT FACTORY FOR BLOWER MODEL LENGTHS NOT SHOWN.

Specification	Units	Part/Model Number			
		SE2B21 036258	SE3B21 036283	SE6B21 037395	SE2B21A 080694
Phase - Frequency	-	Single-50/60 Hz	Single-50/60 Hz	-	Single-50/60 Hz
Voltage	AC	110/115	220/230	24	110/115
RPM	RPM	2850/3400	2850/3400	2850/3400	2850/3400
Insulation Class	-	B	B	B	B
Full - Load Amps	Amps (A)	.17/.14	.07/.07	-	.17/.14
Locked Rotor Amps	Amps (A)	.17/.15	.08/.08	-	.17/.15
Shipping Weight	Lbs	1.9	1.9	1.9	1.9
	Kg	0.9	0.9	0.9	0.9

1 Maximum operating temperature: Motor winding temperature (winding rise plus ambient) should not exceed 140°C for Class F rated motors or 120°C for Class B rated motors. Blower outlet air temperature should not exceed 140°C (air temperature rise plus inlet temperature). Performance curve maximum pressure and suction points are based on a 40°C inlet and ambient temperature. Consult factory for inlet or ambient temperatures above 40°C.

2 Maximum blower amps corresponds to the performance point at which the motor or blower temperature rise with a 40°C inlet and/or ambient temperature reaches the maximum operating temperature.

This document is for informational purposes only and should not be considered as a binding description of the products or their performance in all applications. The performance data on this page depicts typical performance under controlled laboratory conditions. AMETEK is not responsible for blowers driven beyond factory specified speed, temperature, pressure, flow or without proper alignment. Actual performance will vary depending on the operating environment and application. AMETEK products are not designed for and should not be used in medical life support applications. AMETEK reserves the right to revise its products without notification. The above characteristics represent standard products. For product designed to meet specific applications, contact AMETEK Technical & Industrial Products Sales department.

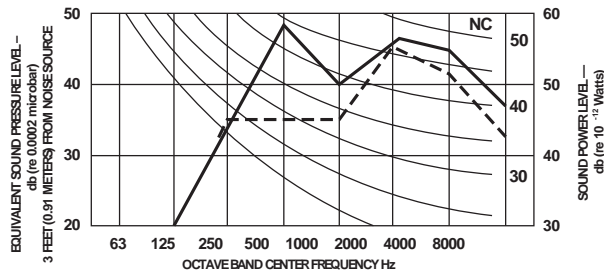
AMETEK TECHNICAL & INDUSTRIAL PRODUCTS
75 North Street, Saugerties, NY 12477
USA: +1 215-256-6601 - Europe: +44 (0) 845 366 9664 - Asia: +86 21 5763 1258
Customer Service Fax: +1 215.256.1338
www.ametektip.com

FEATURES

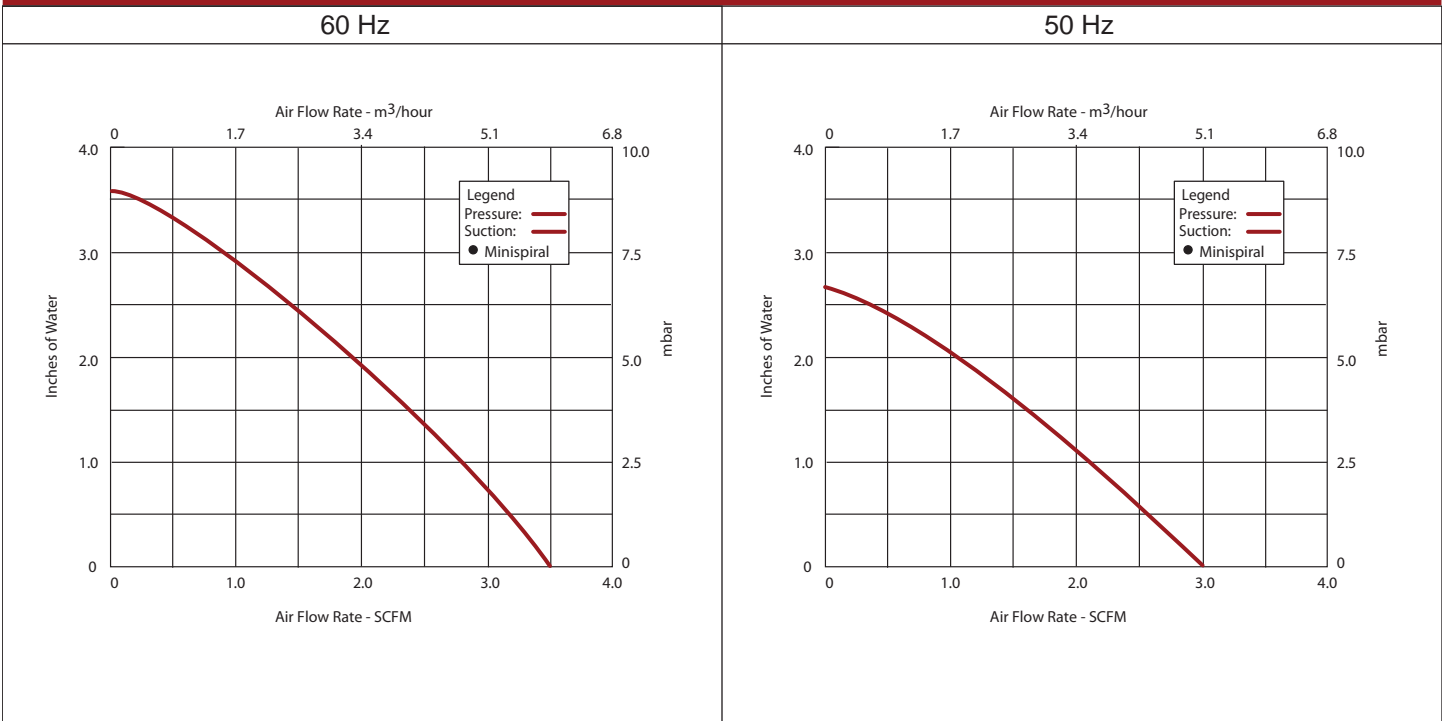
- Manufactured in the USA - ISO 9001 and NAFTA compliant
- Maximum flow: 3.5 SCFM
- Maximum pressure: 3.5 IWG
- Maximum vacuum: 3.5 IWG
- Maximum ambient: 40°C
- Glass filled molded phenolic blower housing, cover & impeller
- Shaded pole motor with ball bearings
- Maximum quiet operation to NC-47 (office equipment specification)
- B10 bearing life: 30,000 hours
- Weight: 1.1 lb (0.5 kg)
- Envelope size: 4.18 x 1.83 inches (106.2 x 46.5 mm)

OPTIONS

- Sealed units
- International voltage and frequency (Hz)

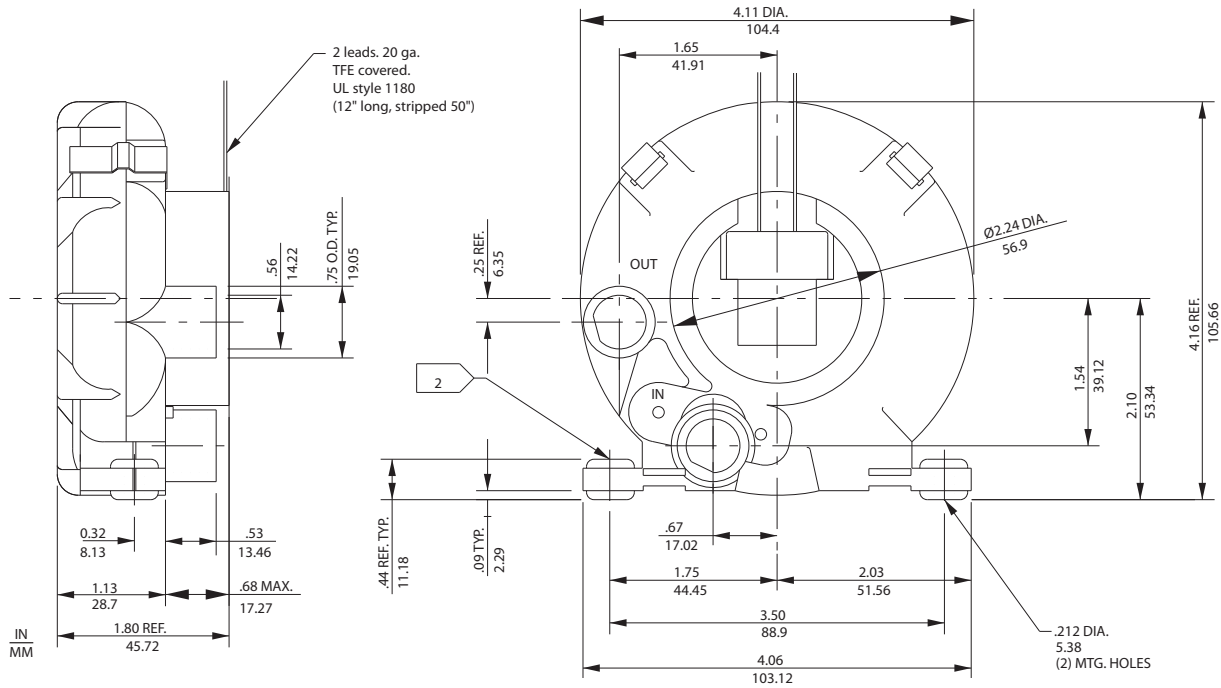


Blower Performance at Standard Conditions



This document is for informational purposes only and should not be considered as a binding description of the products or their performance in all applications. The performance data on this page depicts typical performance under controlled laboratory conditions. AMETEK is not responsible for blowers driven beyond factory specified speed, temperature, pressure, flow or without proper alignment. Actual performance will vary depending on the operating environment and application. AMETEK products are not designed for and should not be used in medical life support applications. AMETEK reserves the right to revise its products without notification. The above characteristics represent standard products. For product designed to meet specific applications, contact AMETEK Technical & Industrial Products Sales department.

Variable Flow Regenerative Blower



- NOTES
- 1 DRAWING NOT TO SCALE, CONTACT FACTORY FOR SCALE CAD DRAWING.
 - 2 CONTACT FACTORY FOR BLOWER MODEL LENGTHS NOT SHOWN.

Specification	Units	Part/Model Number	
		SE12V21 037433	SE24V21 037434
Voltage Range	VDC	9-15	24-32
RPM	RPM	3600-6000	5500-6800
Insulation Class	-	B	B
Full - Load Amps	Amps (A)	0.50-1.0	0.6-0.9
Weight	Lbs	0.86	0.86
	Kg	0.4	0.4

WARNING— ON MDC MODEL: EXCEEDING 1.0 AMP MAY DAMAGE CIRCUIT BOARD.

This document is for informational purposes only and should not be considered as a binding description of the products or their performance in all applications. The performance data on this page depicts typical performance under controlled laboratory conditions. AMETEK is not responsible for blowers driven beyond factory specified speed, temperature, pressure, flow or without proper alignment. Actual performance will vary depending on the operating environment and application. AMETEK products are not designed for and should not be used in medical life support applications. AMETEK reserves the right to revise its products without notification. The above characteristics represent standard products. For product designed to meet specific applications, contact AMETEK Technical & Industrial Products Sales department.

AMETEK TECHNICAL & INDUSTRIAL PRODUCTS
75 North Street, Saugerties, NY 12477
USA: +1 215-256-6601 - Europe: +44 (0) 845 366 9664 - Asia: +86 21 5763 1258
Customer Service Fax: +1 215.256.1338
www.ametektip.com

Application Specific Blowers

Minispiral MDC

Variable Flow Regenerative Blower

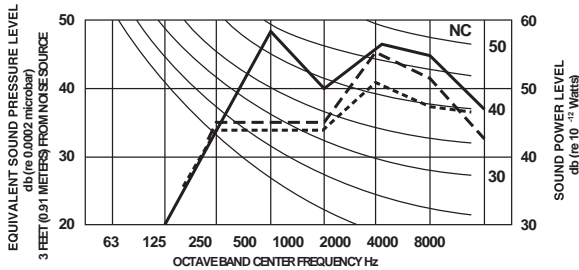
ROTRON®

FEATURES

- Manufactured in the USA - ISO 9001 and NAFTA compliant
- Maximum flow: 5.8/7.3 SCFM (15/32 volts)
- Maximum pressure: 7.0/10.3 IWG (15/32 volts)
- Maximum vacuum: 7.0/10.3 IWG (15/32 volts)
- Maximum ambient: 40°C
- Glass filled molded phenolic and aluminum blower housing, phenolic cover & impeller
- Shaded pole motor with ball bearings
- Maximum quiet operation to NC-47 (office equipment specification)
- B10 bearing life: 20,000 - 30,000 hours
- Weight: 0.86 lbs (0.39 kg)
- Envelope size: 4.18 x 1.83 inches (106.2 x 46.5 mm)

OPTIONS

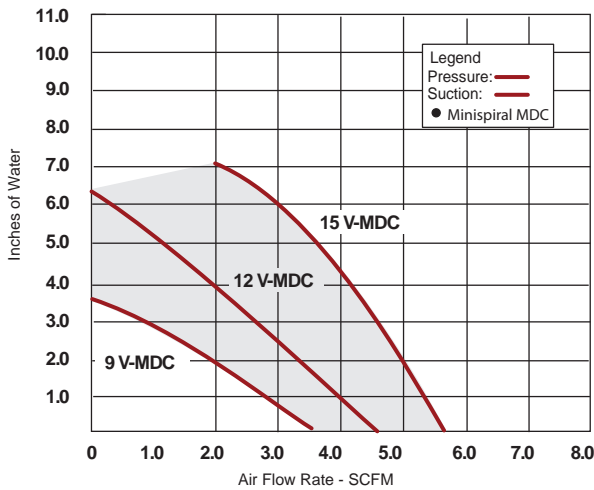
- International and application specific voltages
- Sealed blowers for contamination control
- Electronic speed control



Blower Performance at Standard Conditions

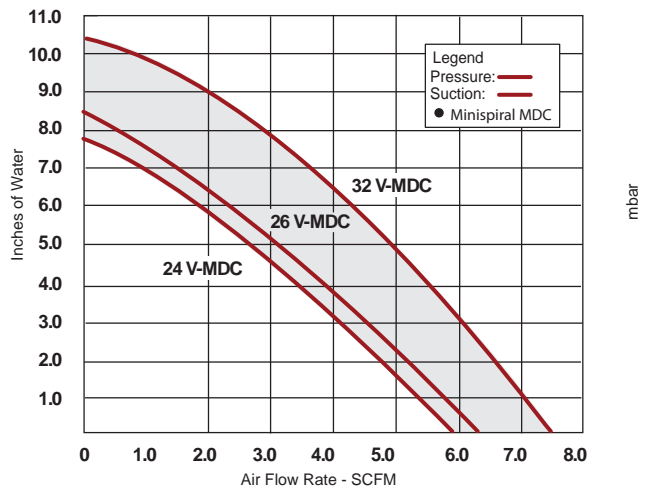
12 V-MDC

Air Flow Rate - m³/hour



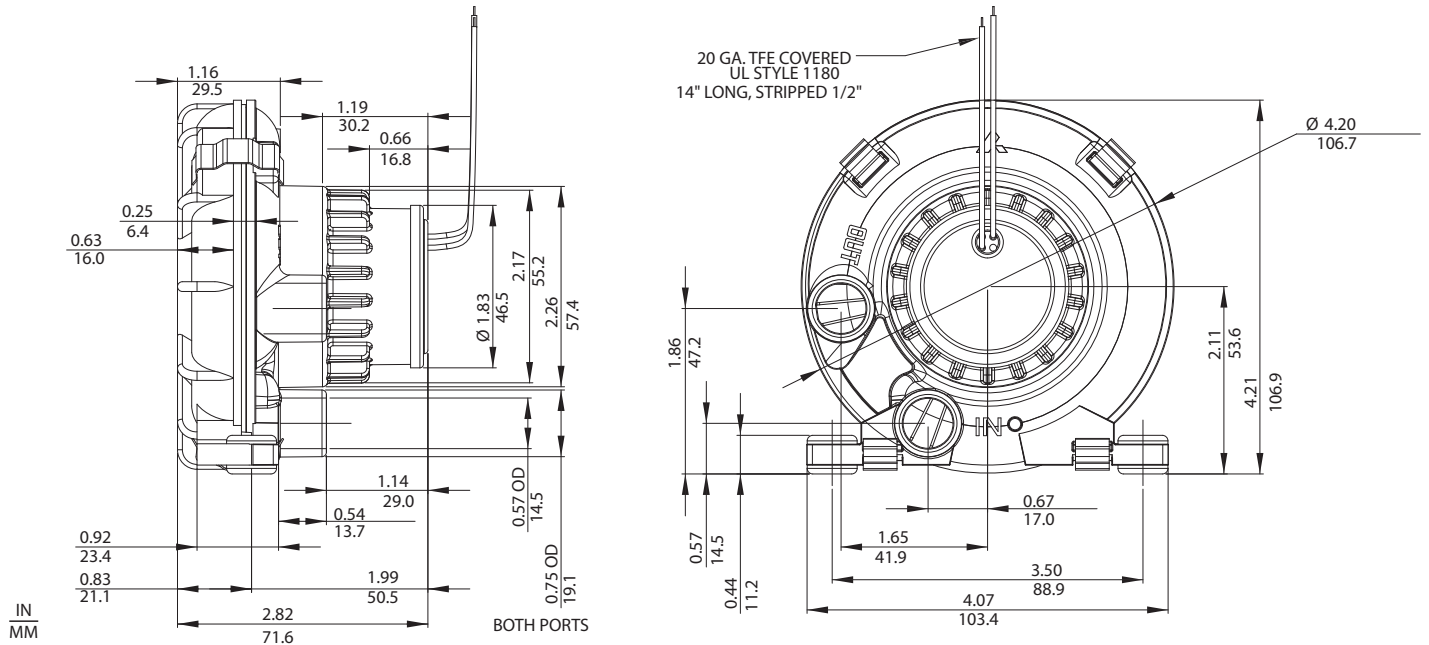
24 V-MDC

Air Flow Rate - m³/hour



This document is for informational purposes only and should not be considered as a binding description of the products or their performance in all applications. The performance data on this page depicts typical performance under controlled laboratory conditions. AMETEK is not responsible for blowers driven beyond factory specified speed, temperature, pressure, flow or without proper alignment. Actual performance will vary depending on the operating environment and application. AMETEK products are not designed for and should not be used in medical life support applications. AMETEK reserves the right to revise its products without notification. The above characteristics represent standard products. For product designed to meet specific applications, contact AMETEK Technical & Industrial Products Sales department.

AMETEK TECHNICAL & INDUSTRIAL PRODUCTS
 75 North Street, Saugerties, NY 12477
 USA: +1 215-256-6601 - Europe: +44 (0) 845 366 9664 - Asia: +86 21 5763 1258
 Customer Service Fax: +1 215.256.1338
www.ametektip.com



- NOTES
 1 DRAWING NOT TO SCALE, CONTACT FACTORY FOR SCALE CAD DRAWING.
 2 CONTACT FACTORY FOR BLOWER MODEL LENGTHS NOT SHOWN.

Specification	Units	Part/Model Number	
		SE12RE21 081548	SE24RE21 080847
Voltage Range	VDC	7.5-15	24-32
RPM	RPM	4400-8750	4400-8750
Insulation Class	-	B	B
Full - Load Amps	Amps (A)	1.2-2.5	1.2-1.6
Weight	Lbs	1.0	1.0
	Kg	0.5	0.5

WARNING – ON HDC MODEL: MOTOR IS NOT POLARITY PROTECTED. CHECK POLARITY CAREFULLY BEFORE ENERGIZING BLOWER.

This document is for informational purposes only and should not be considered as a binding description of the products or their performance in all applications. The performance data on this page depicts typical performance under controlled laboratory conditions. AMETEK is not responsible for blowers driven beyond factory specified speed, temperature, pressure, flow or without proper alignment. Actual performance will vary depending on the operating environment and application. AMETEK products are not designed for and should not be used in medical life support applications. AMETEK reserves the right to revise its products without notification. The above characteristics represent standard products. For product designed to meet specific applications, contact AMETEK Technical & Industrial Products Sales department.

Application Specific Blowers

Minispiral 12/24V HDC

Variable Flow Regenerative Blower

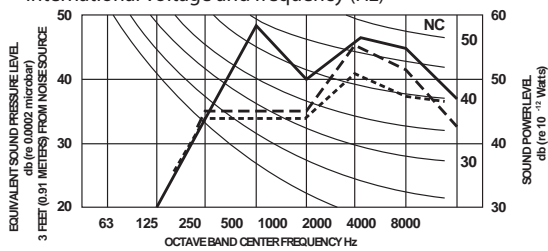
ROTRON®

FEATURES

- Manufactured in the USA - ISO 9001 and NAFTA compliant
- 12 VDC operation: 7.5-15 VDC
- 24 VDC operation: 15-32 VDC
- Maximum flow: 8.5 SCFM (15)
- Maximum pressure: 20.7 IWG (15)
- Maximum vacuum: 20.7 IWG (15)
- Maximum ambient: 40°C
- Glass filled molded phenolic and aluminum blower housing, phenolic cover & impeller
- Brushless DC motor with integrated control electronics
- Maximum quiet operation to NC-47 (office equipment specification)
- Stainless steel ball bearings permanently lubricated for B10 bearing life: 20,000 - 30,000 hours
- Weight: 1.9 lbs (0.86 kg)
- Envelope size: 4.18 x 1.83 inches (106.2 x 46.5 mm)

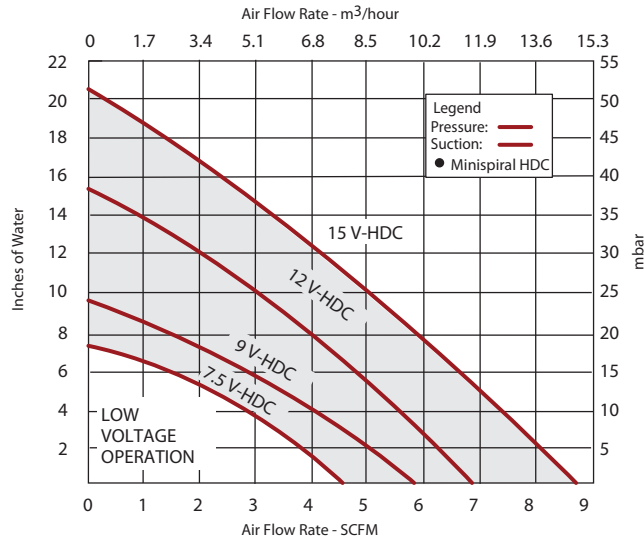
OPTIONS

- International and application specific voltages
- Sealed blowers for contamination control
- Electronic speed control
- Low voltage option
- International voltage and frequency (Hz)



Blower Performance at Standard Conditions

Minispiral HDC



This document is for informational purposes only and should not be considered as a binding description of the products or their performance in all applications. The performance data on this page depicts typical performance under controlled laboratory conditions. AMETEK is not responsible for blowers driven beyond factory specified speed, temperature, pressure, flow or without proper alignment. Actual performance will vary depending on the operating environment and application. AMETEK products are not designed for and should not be used in medical life support applications. AMETEK reserves the right to revise its products without notification. The above characteristics represent standard products. For product designed to meet specific applications, contact AMETEK Technical & Industrial Products Sales department.

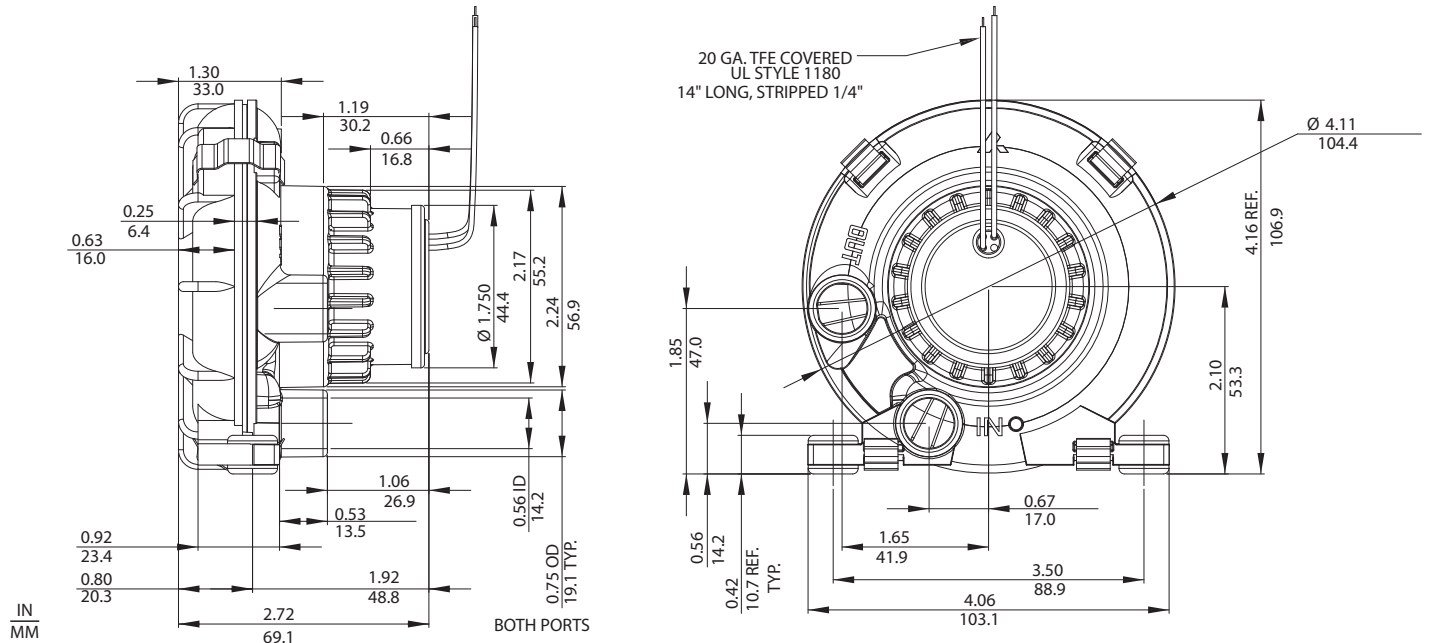
AMETEK TECHNICAL & INDUSTRIAL PRODUCTS
 75 North Street, Saugerties, NY 12477
 USA: +1 215-256-6601 - Europe: +44 (0) 845 366 9664 - Asia: +86 21 5763 1258
 Customer Service Fax: +1 215.256.1338
www.ametektip.com

Application Specific Blowers

Minispiral 12V HDC Extra Flow / Extra Wide Fat Boy

Variable Flow Regenerative Blower

ROTRON®



NOTES

- 1 DRAWING NOT TO SCALE, CONTACT FACTORY FOR SCALE CAD DRAWING.
- 2 CONTACT FACTORY FOR BLOWER MODEL LENGTHS NOT SHOWN.

		Part/Model Number
		SE12RE21A
Specification	Units	081881
RPM	RPM	7397 - 13205
Voltage Range	VDC	7.5 - 15
Insulation Class	-	B
Full - Load Amps	Amps (A)	2.7 - 6.2
Weight	Lbs	2.5
	Kg	1.1

WARNING – ON HDC MODEL: MOTOR IS NOT POLARITY PROTECTED. CHECK POLARITY CAREFULLY BEFORE ENERGIZING BLOWER.

This document is for informational purposes only and should not be considered as a binding description of the products or their performance in all applications. The performance data on this page depicts typical performance under controlled laboratory conditions. AMETEK is not responsible for blowers driven beyond factory specified speed, temperature, pressure, flow or without proper alignment. Actual performance will vary depending on the operating environment and application. AMETEK products are not designed for and should not be used in medical life support applications. AMETEK reserves the right to revise its products without notification. The above characteristics represent standard products. For product designed to meet specific applications, contact AMETEK Technical & Industrial Products Sales department.

AMETEK TECHNICAL & INDUSTRIAL PRODUCTS
 75 North Street, Saugerties, NY 12477
 USA: +1 215-256-6601 - Europe: +44 (0) 845 366 9664 - Asia: +86 21 5763 1258
 Customer Service Fax: +1 215.256.1338
www.ametektip.com

Application Specific Blowers

Minispiral 12V HDC Extra Flow / Extra Wide Fat Boy

Variable Flow Regenerative Blower

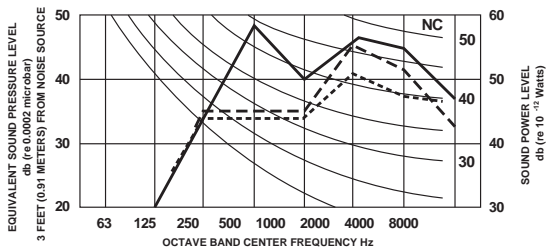
ROTRON®

FEATURES

- Manufactured in the USA - ISO 9001 and NAFTA compliant
- Maximum flow: 12.6 SCFM (15)
- Maximum pressure: 26 IWG (15)
- Maximum vacuum: 26 IWG (15)
- Maximum ambient: 40°C
- Glass filled molded phenolic blower, cover & impeller, aluminum housing
- Brushless DC motor with integrated control electronics
- Stainless steel ball bearings permanently lubricated for B10 bearing life: 20,000 - 30,000 hours
- Weight: 1.9 lbs (0.86 kg)
- Compact high performance design: 4.18 x 1.83 inches (106.2 x 46.5 mm)

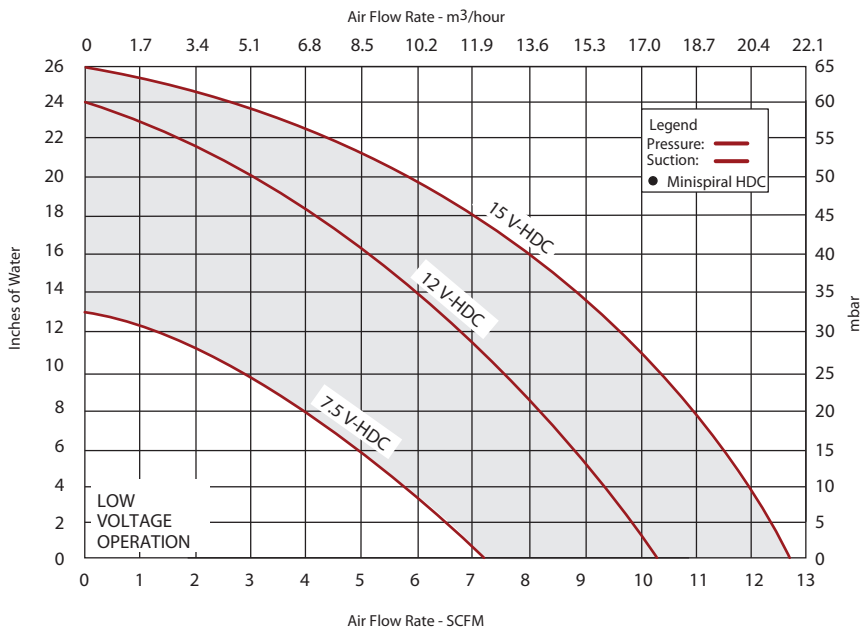
OPTIONS

- International and application specific voltages
- Sealed blowers for contamination control
- Electronic speed control
- Low voltage option
- Speed sensing output (FPS)



Blower Performance at Standard Conditions

Minispiral HDC



This document is for informational purposes only and should not be considered as a binding description of the products or their performance in all applications. The performance data on this page depicts typical performance under controlled laboratory conditions. AMETEK is not responsible for blowers driven beyond factory specified speed, temperature, pressure, flow or without proper alignment. Actual performance will vary depending on the operating environment and application. AMETEK products are not designed for and should not be used in medical life support applications. AMETEK reserves the right to revise its products without notification. The above characteristics represent standard products. For product designed to meet specific applications, contact AMETEK Technical & Industrial Products Sales department.

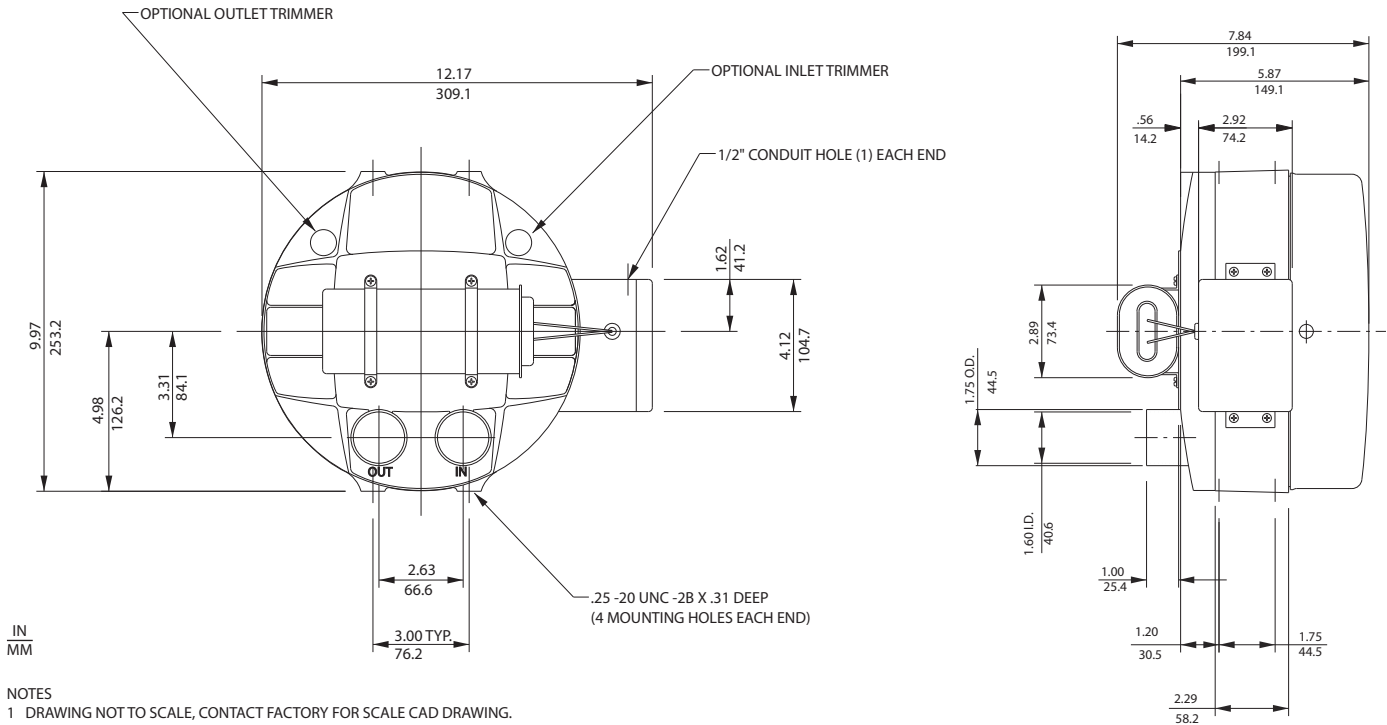
AMETEK TECHNICAL & INDUSTRIAL PRODUCTS
 75 North Street, Saugerties, NY 12477
 USA: +1 215-256-6601 - Europe: +44 (0) 845 366 9664 - Asia: +86 21 5763 1258
 Customer Service Fax: +1 215.256.1338
www.ametektip.com

Application Specific Blowers

SPIRAL Simplex SL2

Instrument Grade Regenerative Blower

ROTRON®



Specification	Units	Part/Model Number		
		SL2P2 036000	SL2P52 036013	SL2P90 036018
Motor Enclosure - Shaft Mtl.	-	ODP-CS	ODP-CS	ODP-CS
Horsepower	-	.5	.5	.5
Voltage	AC	115	208-230	380/460
Phase - Frequency	-	Single-50/60 Hz	Single 60 Hz	Three-50/60 Hz
Insulation Class	-	B	B	B
Full - Load Amps	Amps (A)	2.45/3.60	.95/1.54	.34/.41
Service Factor	-	1.0	1.0	1.0
Locked Rotor Amps	Amps (A)	10.0	4.3	1.9
NEMA Starter Size	-	00/00	00/00	00/00
Shipping Weight	Lbs	27	27	27
	Kg	12.2	12.2	12.2

Voltage - ROTRON motors are designed to handle a broad range of world voltages and power supply variations. Our dual voltage 3 phase motors are factory tested and certified to operate on both: **208-230/415-460 VAC-3 ph-60 Hz** and **190-208/380-415 VAC-3 ph-50 Hz**. Our dual voltage 1 phase motors are factory tested and certified to operate on both: **104-115/208-230 VAC-1 ph-60 Hz** and **100-110/200-220 VAC-1 ph-50 Hz**. All voltages above can handle a $\pm 10\%$ voltage fluctuation. Special wound motors can be ordered for voltages outside our certified range.

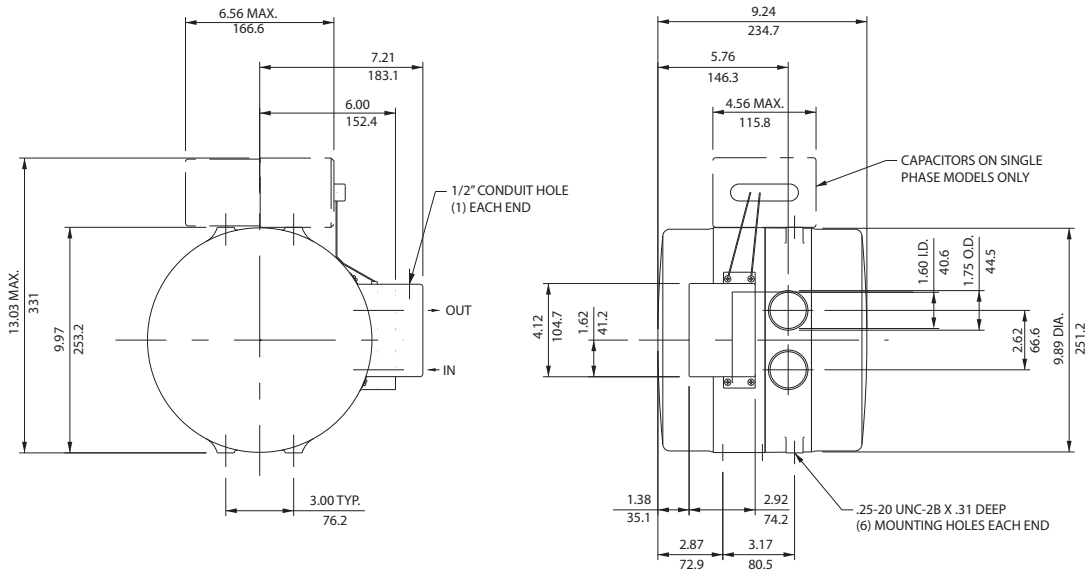
Operating Temperatures - Maximum operating temperature: Motor winding temperature (winding rise plus ambient) should not exceed 140°C for Class F rated motors or 120°C for Class B rated motors. Blower outlet air temperature should not exceed 140°C (air temperature rise plus inlet temperature). Performance curve maximum pressure and suction points are based on a 40°C inlet and ambient temperature. Consult factory for inlet or ambient temperatures above 40°C .

Maximum Blower Amps - Corresponds to the performance point at which the motor or blower temperature rise with a 40°C inlet and/or ambient temperature reaches the maximum operating temperature.

This document is for informational purposes only and should not be considered as a binding description of the products or their performance in all applications. The performance data on this page depicts typical performance under controlled laboratory conditions. AMETEK is not responsible for blowers driven beyond factory specified speed, temperature, pressure, flow or without proper alignment. Actual performance will vary depending on the operating environment and application. AMETEK products are not designed for and should not be used in medical life support applications. AMETEK reserves the right to revise its products without notification. The above characteristics represent standard products. For product designed to meet specific applications, contact AMETEK Technical & Industrial Products Sales department.

AMETEK TECHNICAL & INDUSTRIAL PRODUCTS
75 North Street, Saugerties, NY 12477
USA: +1 215-256-6601 - Europe: +44 (0) 845 366 9664 - Asia: +86 21 5763 1258
Customer Service Fax: +1 215.256.1338
www.ametektip.com

Instrument Grade Regenerative Blower



IN
MM

- NOTES
 1 DRAWING NOT TO SCALE, CONTACT FACTORY FOR SCALE CAD DRAWING.
 2 CONTACT FACTORY FOR BLOWER MODEL LENGTHS NOT SHOWN.

Specification	Units	Part/Model Number	
		SL4P2 036009	SL4P52 036027
Motor Enclosure - Shaft Mtl.	-	ODP-CS	ODP-CS
Horsepower	-	.75	.75
Voltage	AC	115	208-230
Phase - Frequency	-	Single-50/60 Hz	Single 60 Hz
Insulation Class	-	B	B
Full - Load Amps	Amps (A)	3.70/3.80	2.29/2.20
Service Factor	-	1.0	1.0
Locked Rotor Amps	Amps (A)	14.0	7.0
NEMA Starter Size	-	00/00	00/00
Shipping Weight	Lbs	42	42
	Kg	19.1	19.1

Voltage - ROTRON motors are designed to handle a broad range of world voltages and power supply variations. Our dual voltage 3 phase motors are factory tested and certified to operate on both: **208-230/415-460 VAC-3 ph-60 Hz** and **190-208/380-415 VAC-3 ph-50 Hz**. Our dual voltage 1 phase motors are factory tested and certified to operate on both: **104-115/208-230 VAC-1 ph-60 Hz** and **100-110/200-220 VAC-1 ph-50 Hz**. All voltages above can handle a ±10% voltage fluctuation. Special wound motors can be ordered for voltages outside our certified range.

Operating Temperatures - Maximum operating temperature: Motor winding temperature (winding rise plus ambient) should not exceed 140°C for Class F rated motors or 120°C for Class B rated motors. Blower outlet air temperature should not exceed 140°C (air temperature rise plus inlet temperature). Performance curve maximum pressure and suction points are based on a 40°C inlet and ambient temperature. Consult factory for inlet or ambient temperatures above 40°C.

Maximum Blower Amps - Corresponds to the performance point at which the motor or blower temperature rise with a 40°C inlet and/or ambient temperature reaches the maximum operating temperature.

This document is for informational purposes only and should not be considered as a binding description of the products or their performance in all applications. The performance data on this page depicts typical performance under controlled laboratory conditions. AMETEK is not responsible for blowers driven beyond factory specified speed, temperature, pressure, flow or without proper alignment. Actual performance will vary depending on the operating environment and application. AMETEK products are not designed for and should not be used in medical life support applications. AMETEK reserves the right to revise its products without notification. The above characteristics represent standard products. For product designed to meet specific applications, contact AMETEK Technical & Industrial Products Sales department.

FEATURES

- Manufactured in the USA - ISO 9001 and NAFTA compliant
- CE compliant - Declaration of Conformity on file
- Maximum flow: 65 SCFM
- Maximum pressure: 60 IWG
- Maximum vacuum: 55.8 IWG
- Standard motor: 0.75 HP, ODP
- Cast aluminum blower housing, impeller & cover; slip-on flanges
- Motor with permanently sealed ball bearings
- Inlet & outlet internal muffling
- Quiet operation within OSHA standards
- Thermal overload protection

OPTIONS

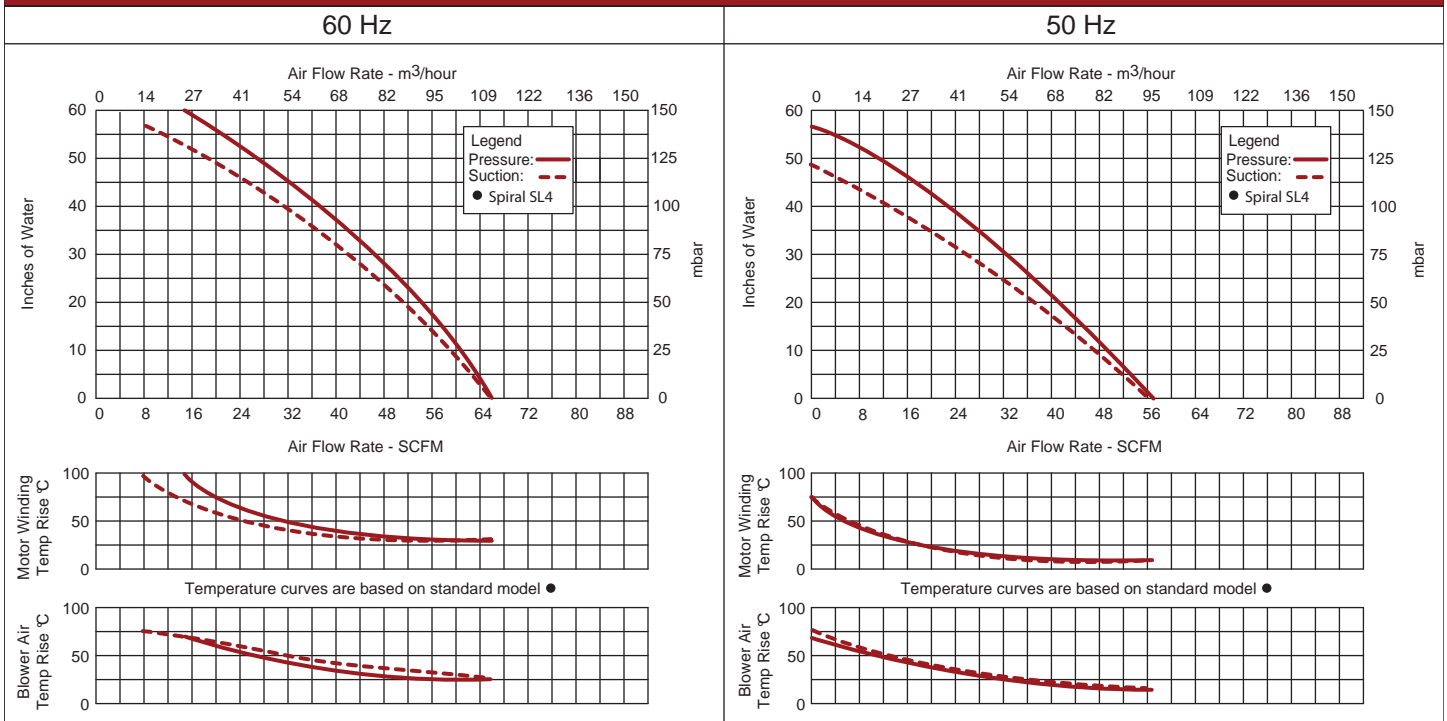
- International voltage & frequency (Hz)
- Hermetically sealed
- UL & CSA approved motor
- Remote drive (motorless) model
- Factory installed trimmers for adjusting air flow rate

ACCESSORIES

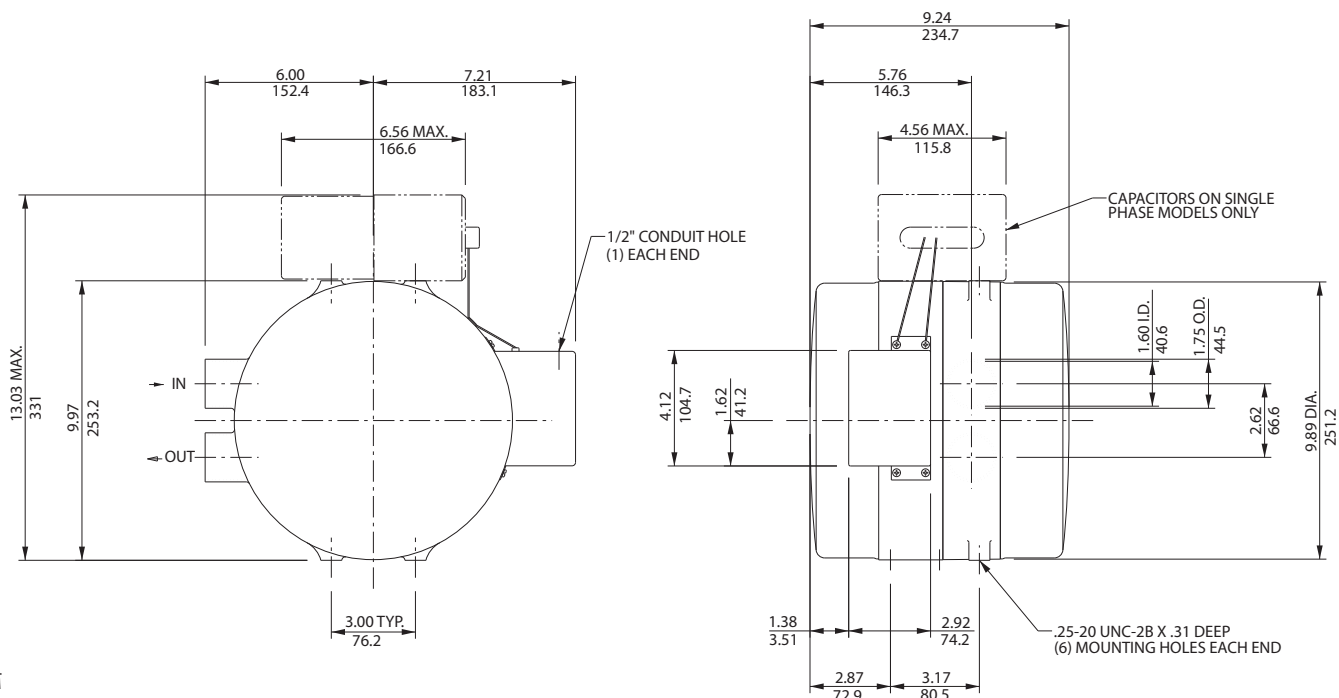
- Flowmeters reading in SCFM
- Filters & moisture separators
- Pressure gauges, vacuum gauges, & relief valves
- Switches - air flow, pressure, vacuum, or temperature
- External mufflers for additional silencing
- Air knives (used on blow-off applications)



Blower Performance at Standard Conditions



This document is for informational purposes only and should not be considered as a binding description of the products or their performance in all applications. The performance data on this page depicts typical performance under controlled laboratory conditions. AMETEK is not responsible for blowers driven beyond factory specified speed, temperature, pressure, flow or without proper alignment. Actual performance will vary depending on the operating environment and application. AMETEK products are not designed for and should not be used in medical life support applications. AMETEK reserves the right to revise its products without notification. The above characteristics represent standard products. For product designed to meet specific applications, contact AMETEK Technical & Industrial Products Sales department.



NOTES

- 1 DRAWING NOT TO SCALE, CONTACT FACTORY FOR SCALE CAD DRAWING.
- 2 CONTACT FACTORY FOR BLOWER MODEL LENGTHS NOT SHOWN.

		Part/Model Number	
		SL5P2	SL5P52
Specification	Units	036010	036261
Motor Enclosure - Shaft Mtl.	-	ODP-CS	ODP-CS
Horsepower	-	.75	.75
Voltage	AC	115	208-230
Phase - Frequency	-	Single-50/60 Hz	Single 60 Hz
Insulation Class	-	B	B
Full - Load Amps	Amps (A)	4.58/6.75	1.85/2.55
Service Factor	-	1.0	1.0
Locked Rotor Amps	Amps (A)	14.0	7.0
NEMA Starter Size	-	00/00	00/00
Shipping Weight	Lbs	42	42
	Kg	19.1	19.1

Voltage - ROTRON motors are designed to handle a broad range of world voltages and power supply variations. Our dual voltage 3 phase motors are factory tested and certified to operate on both: **208-230/415-460 VAC-3 ph-60 Hz** and **190-208/380-415 VAC-3 ph-50 Hz**. Our dual voltage 1 phase motors are factory tested and certified to operate on both: **104-115/208-230 VAC-1 ph-60 Hz** and **100-110/200-220 VAC-1 ph-50 Hz**. All voltages above can handle a ±10% voltage fluctuation. Special wound motors can be ordered for voltages outside our certified range.

Operating Temperatures - Maximum operating temperature: Motor winding temperature (winding rise plus ambient) should not exceed 140°C for Class F rated motors or 120°C for Class B rated motors. Blower outlet air temperature should not exceed 140°C (air temperature rise plus inlet temperature). Performance curve maximum pressure and suction points are based on a 40°C inlet and ambient temperature. Consult factory for inlet or ambient temperatures above 40°C.

Maximum Blower Amps - Corresponds to the performance point at which the motor or blower temperature rise with a 40°C inlet and/or ambient temperature reaches the maximum operating temperature.

This document is for informational purposes only and should not be considered as a binding description of the products or their performance in all applications. The performance data on this page depicts typical performance under controlled laboratory conditions. AMETEK is not responsible for blowers driven beyond factory specified speed, temperature, pressure, flow or without proper alignment. Actual performance will vary depending on the operating environment and application. AMETEK products are not designed for and should not be used in medical life support applications. AMETEK reserves the right to revise its products without notification. The above characteristics represent standard products. For product designed to meet specific applications, contact AMETEK Technical & Industrial Products Sales department.

Application Specific Blowers

SPIRAL Duplex SL5

Instrument Grade Regenerative Blower

FEATURES

- Manufactured in the USA - ISO 9001 and NAFTA compliant
- CE compliant - Declaration of Conformity on file
- Maximum flow: 100 SCFM
- Maximum pressure: 31 IWG
- Maximum vacuum: 31.3 IWG
- Standard motor: 0.75 HP, ODP
- Cast aluminum blower housing, impeller & cover; slip-on flanges
- Motor with permanently sealed ball bearings
- Inlet & outlet internal muffling
- Quiet operation within OSHA standards
- Thermal overload protection

OPTIONS

- International voltage & frequency (Hz)
- Hermetically sealed
- UL & CSA approved motor
- Remote drive (motorless) model
- Factory installed trimmers for adjusting air flow rate

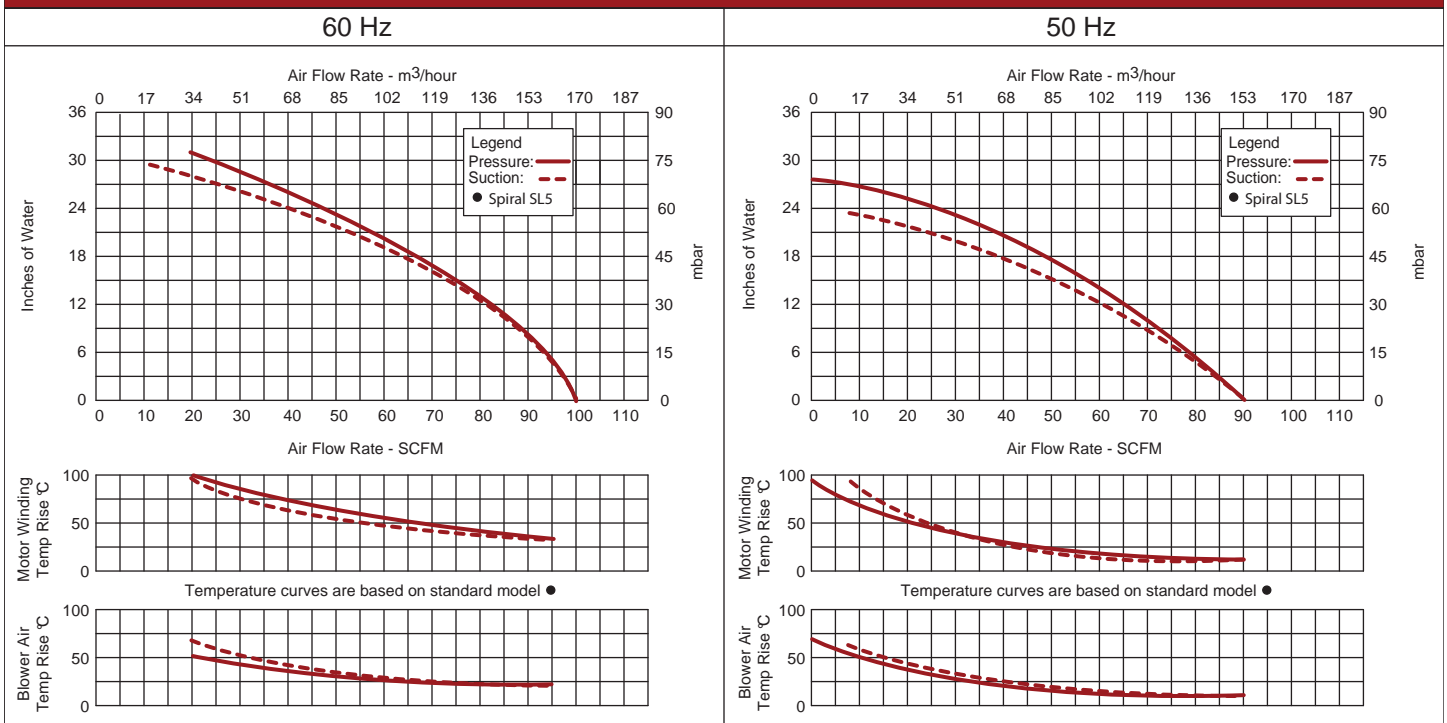
ACCESSORIES

- Flowmeters reading in SCFM
- Filters & moisture separators
- Pressure gauges, vacuum gauges, & relief valves
- Switches - air flow, pressure, vacuum, or temperature
- External mufflers for additional silencing
- Air knives (used on blow-off applications)



ROTRON®

Blower Performance at Standard Conditions



This document is for informational purposes only and should not be considered as a binding description of the products or their performance in all applications. The performance data on this page depicts typical performance under controlled laboratory conditions. AMETEK is not responsible for blowers driven beyond factory specified speed, temperature, pressure, flow or without proper alignment. Actual performance will vary depending on the operating environment and application. AMETEK products are not designed for and should not be used in medical life support applications. AMETEK reserves the right to revise its products without notification. The above characteristics represent standard products. For product designed to meet specific applications, contact AMETEK Technical & Industrial Products Sales department.

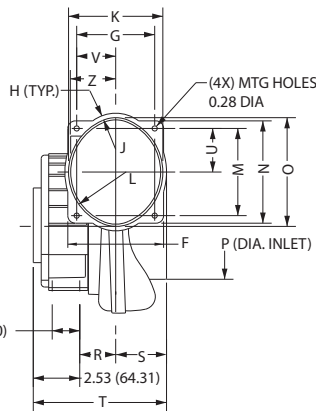
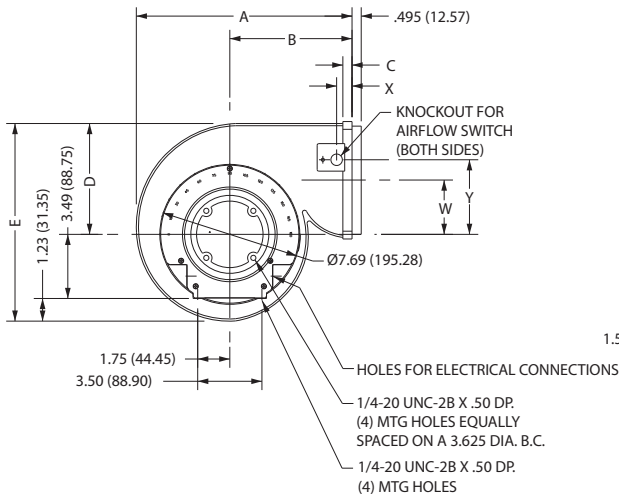
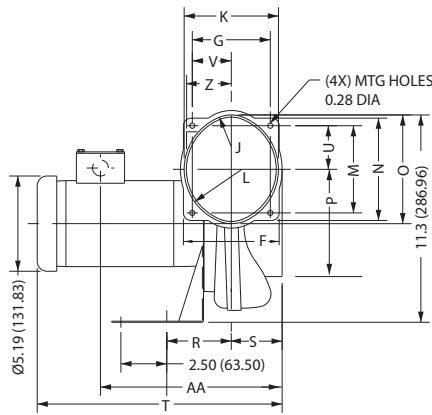
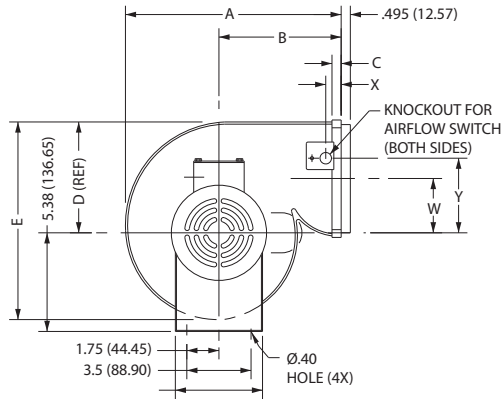
AMETEK TECHNICAL & INDUSTRIAL PRODUCTS

75 North Street, Saugerties, NY 12477

USA: +1 215-256-6601 - Europe: +44 (0) 845 366 9664 - Asia: +86 21 5763 1258

Customer Service Fax: +1 215.256.1338

www.ametektip.com



IN
MM

- NOTES
 1 DRAWING NOT TO SCALE, CONTACT FACTORY FOR SCALE CAD DRAWING.
 2 CONTACT FACTORY FOR BLOWER MODEL LENGTHS NOT SHOWN.

	NC33A (STD)	NC33AE9 (TEFC)	NC33AG58 (XP)
A	11.55 (293.2)	11.55 (293.2)	11.55 (293.2)
B	6.07 (154.2)	6.07 (154.2)	6.07 (154.2)
C	0.495 (12.6)	0.495 (12.6)	0.495 (12.6)
D	6.04 (153.4)	6.04 (153.4)	6.04 (153.4)
E	10.76 (273.3)	10.76 (273.3)	10.76 (273.3)
F	5.19 (131.8)	5.19 (131.8)	5.19 (131.8)
G	4.25 (108)	4.25 (108)	4.25 (108)
H	0.25 (6.4)	0.25 (6.4)	0.25 (6.4)
J	1.75 (44.5)	1.75 (44.5)	1.75 (44.5)
K	5.10 (129.5)	5.10 (129.5)	5.10 (129.5)
L	3.13 (79.5)	3.13 (79.5)	3.13 (79.5)
M	4.75 (120.7)	4.75 (120.7)	4.75 (120.7)
N	5.59 (142)	5.59 (142)	5.59 (142)
O	5.90 (149.9)	5.90 (149.9)	5.90 (149.9)
P	6.0 (152.4)	6.0 (152.4)	6.0 (152.4)
R	1.97 (50)	3.52 (89.4)	4.20 (106.7)
S	2.78 (70.6)	2.78 (70.6)	2.78 (70.6)
T	7.26 (184.4)	13.35 (339.1)	13.94 (354.1)
U	2.38 (60.5)	2.38 (60.5)	2.38 (60.5)
V	2.13 (54.1)	2.13 (54.1)	2.13 (54.1)
W	2.96 (75.2)	2.96 (75.2)	2.96 (75.2)
X	0.84 (21.3)	0.84 (21.3)	0.84 (21.3)
Y	4.0 (101.6)	4.0 (101.6)	4.0 (101.6)
Z	2.5 (63.5)	2.5 (63.5)	2.5 (63.5)
AA	---	7.13 (181.1)	---

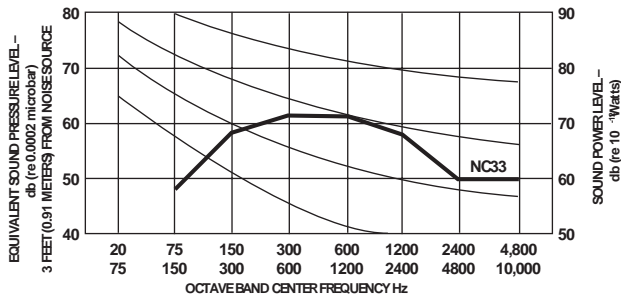
Specification	Units	Part/Model Number				
		NC33A2G 037791	NC33A3G 037792	NC33A33G 037793	NC33AE9 080114	NC33AG58 080113
Phase - Frequency	-	Single-50/60 Hz	Single-50/60 Hz	Three-50/60 Hz	Single-50/60 Hz	Single-50/60 Hz
Voltage	AC	115	220/230	208-230	115/230	115/230
RPM on 50/60 Hz	-	2900/3500	2900/3500	2900/3500	2900/3500	2900/3500
Insulation Class	-	B	B	B	F	F
Full - Load Amps	Amps (A)	3.44/3.84	1.47/1.82	1.10/1.18	6.0/3.0	4.4
Locked Rotor Amps	Amps (A)	8.25	4.0	5.0	21/10.5	38/19
Shipping Weight	Lbs	18	18	18	28	30
	Kg	8.2	8.2	8.2	12.7	13.6
Motor Enclosure	-	Standard	Standard	Standard	TEFC	XP

This document is for informational purposes only and should not be considered as a binding description of the products or their performance in all applications. The performance data on this page depicts typical performance under controlled laboratory conditions. AMETEK is not responsible for blowers driven beyond factory specified speed, temperature, pressure, flow or without proper alignment. Actual performance will vary depending on the operating environment and application. AMETEK products are not designed for and should not be used in medical life support applications. AMETEK reserves the right to revise its products without notification. The above characteristics represent standard products. For product designed to meet specific applications, contact AMETEK Technical & Industrial Products Sales department.

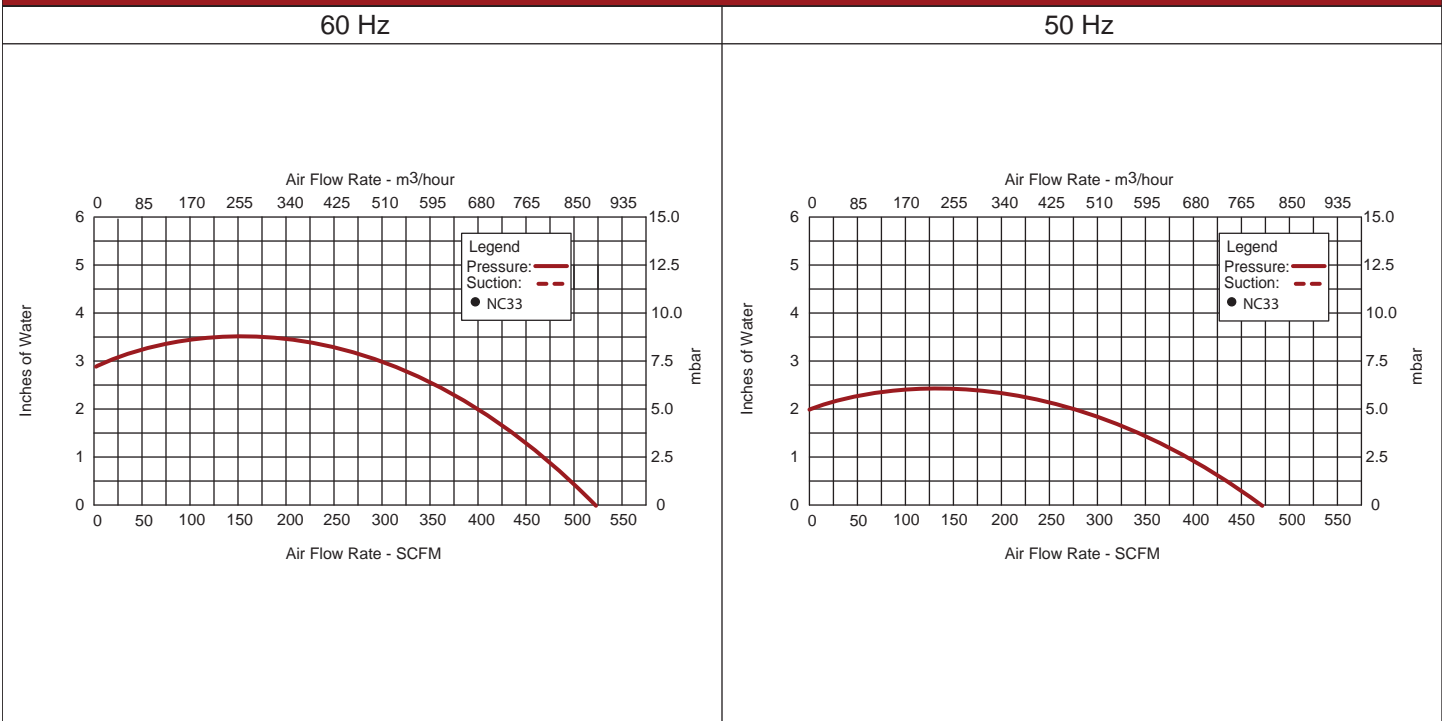
AMETEK TECHNICAL & INDUSTRIAL PRODUCTS
 75 North Street, Saugerties, NY 12477
 USA: +1 215-256-6601 - Europe: +44 (0) 845 366 9664 - Asia: +86 21 5763 1258
 Customer Service Fax: +1 215.256.1338
 www.ametektip.com

FEATURES

- Manufactured in the USA - ISO 9001 and NAFTA compliant
- Maximum flow: 540 SCFM
- Maximum pressure: 3.5 IWG
- Thermoset plastic blower housing with aluminum impeller
- Permanently seal ball bearings in motor - L10 bearing life: 50,000 hours
- Quiet operation within OSHA standards
- Shipping weight: 18 lbs (8.2 kg) for standard model
28 lbs (12.7 kg) for TEFC model
30 lbs (13.6 kg) for XP model
- Designed for UL and CSA
- Automatic thermal overload protection on standard motor enclosures



Blower Performance at Standard Conditions



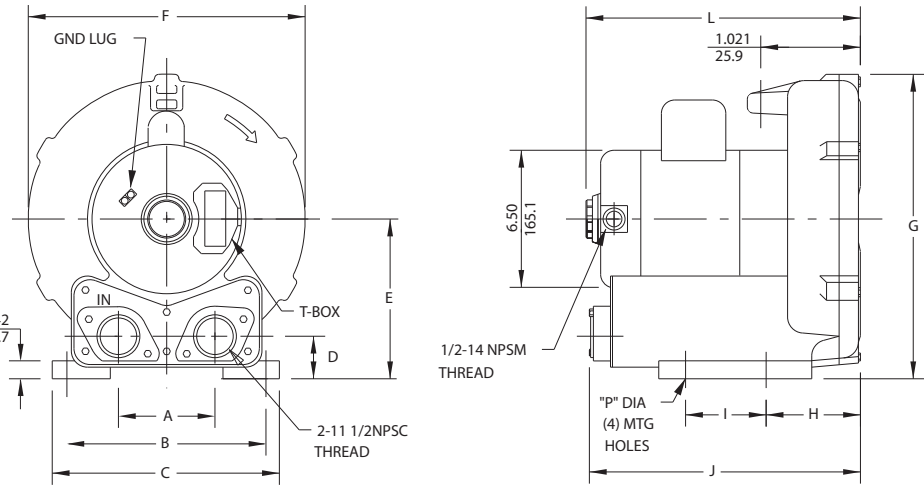
This document is for informational purposes only and should not be considered as a binding description of the products or their performance in all applications. The performance data on this page depicts typical performance under controlled laboratory conditions. AMETEK is not responsible for blowers driven beyond factory specified speed, temperature, pressure, flow or without proper alignment. Actual performance will vary depending on the operating environment and application. AMETEK products are not designed for and should not be used in medical life support applications. AMETEK reserves the right to revise its products without notification. The above characteristics represent standard products. For product designed to meet specific applications, contact AMETEK Technical & Industrial Products Sales department.

Application Specific Blowers

DR 404/454/505/513/656

Spa Blowers

ROTRON®



IN
MM

- NOTES
 1 DRAWING NOT TO SCALE, CONTACT FACTORY FOR SCALE CAD DRAWING.
 2 CONTACT FACTORY FOR BLOWER MODEL LENGTHS NOT SHOWN.

MODEL	A (IN/MM)	B (IN/MM)	C (IN/MM)	D (IN/MM)	E (IN/MM)	F (IN/MM)	G (IN/MM)	H (IN/MM)	I (IN/MM)	J (IN/MM)	K (IN/MM)	L (IN/MM)
DR404AQ58M	4.75/120.7	8.93/226.8	10.12/257	1.92/48.8	6.28/159.5	11.5/292.1	12.16/308.9	3.0/76.2	3.75/95.3	12.88/327.2	.59/15	12.91/327.9
DR454V58	4.75/120.7	10.30/261.6	11.38/289.1	1.92/48.8	6.98/177.3	12.55/318.8	13.52/343.4	3.25/82.6	4.50/114.3	10.81/274.6	.59/15	14.45/367
DR505AW58M	4.75/120.7	10.30/261.6	11.70/297.2	1.87/47.5	7.26/184.4	13.53/343.7	14.38/365.3	3.56/92.7	4.50/114.3	14.38/365.3	.59/15	15.0/381
DR513V58	4.75/120.7	11.42/290.1	13.0/330.2	2.23/56.6	8.69/220.7	14.21/360.9	15.8/401.3	3.72/94.5	5.50/139.7	13.74/349	.59/15	14.58/370.3
DR656K58X	4.92/125	11.42/290.1	12.8/325.1	2.25/57.2	7.46/189.5	15.42/391.7	15.17/385.3	4.14/105.2	5.5/139.7	15.12/384.1	.59/15	15.51/393.9

Specification	Units	Part/Model Number				
		DR404AQ58M 037778	DR454V58M 080485	DR505AW58M 037935	DR513V58 038143	DR656K58X 080603
Motor Enclosure - Shaft Mtl.	-	SPA (ODP)-CS	SPA (ODP)-CS	SPA (ODP)-CS	SPA (ODP)-CS	TEFC-CS
Horsepower	-	1.0	1.5	2.0	1.5	3.0
Voltage	AC	115/230	115/230	115/230	115/230	115/230
Phase - Frequency	-	Single-50/60 Hz	Single-50/60 Hz	Single-50/60 Hz	Single-50/60 Hz	Single-50/60 Hz
Insulation Class	-	F	F	F	F	F
NEMA Rated Motor Amps	Amps (A)	15/7.5	15.2/7.6	17.6/8.8	15.2/7.6	31/15.5
Service Factor	-	1.4	1.3	1.2	1.3	1.0
Maximum Blower Amps	Amps (A)	8/4	17/8.5	26/13	17/8.5	27.8/13.9
Locked Rotor Amps	Amps (A)	32/16	85/43	106/53	85/43	200/100
Recommended NEMA Starter	Size-	0/00	1/0	1/0	1/0	1.5/1
Shipping Weight	Lbs	64	76	83	90	51
	Kg	29	34.5	37.6	40.8	23.1
Recommended Number of Jets	-	3-6	5-10	5-10	12-17	8-12

Voltage - ROTRON motors are designed to handle a broad range of world voltages and power supply variations. Our dual voltage 3 phase motors are factory tested and certified to operate on both: **208-230/415-460 VAC-3 ph-60 Hz** and **190-208/380-415 VAC-3 ph-50 Hz**. Our dual voltage 1 phase motors are factory tested and certified to operate on both: **104-115/208-230 VAC-1 ph-60 Hz** and **100-110/200-220 VAC-1 ph-50 Hz**. All voltages above can handle a ±10% voltage fluctuation. Special wound motors can be ordered for voltages outside our certified range.

Operating Temperatures - Maximum operating temperature: Motor winding temperature (winding rise plus ambient) should not exceed 140°C for Class F rated motors or 120°C for Class B rated motors. Blower outlet air temperature should not exceed 140°C (air temperature rise plus inlet temperature). Performance curve maximum pressure and suction points are based on a 40°C inlet and ambient temperature. Consult factory for inlet or ambient temperatures above 40°C.

Maximum Blower Amps - Corresponds to the performance point at which the motor or blower temperature rise with a 40°C inlet and/or ambient temperature reaches the maximum operating temperature.

Notes

- The blower should not be stopped/started more than four times and hour.
- Use of relief valve 515092 is required for all blowers.

This document is for informational purposes only and should not be considered as a binding description of the products or their performance in all applications. The performance data on this page depicts typical performance under controlled laboratory conditions. AMETEK is not responsible for blowers driven beyond factory specified speed, temperature, pressure, flow or without proper alignment. Actual performance will vary depending on the operating environment and application. AMETEK products are not designed for and should not be used in medical life support applications. AMETEK reserves the right to revise its products without notification. The above characteristics represent standard products. For product designed to meet specific applications, contact AMETEK Technical & Industrial Products Sales department.

Application Specific Blowers

DR 404/454/505/513/656

Spa Blowers

FEATURES

- Manufactured in the USA - ISO 9001 and NAFTA compliant
- CE compliant - Declaration of Conformity on file
- Maximum flow: 105, 127, 160, 200 or 78 SCFM
- Maximum pressure: 56, 58, 74, 69 or 88 IWG
- Standard motor: 1.0, 1.5, 2.0, 3.0 HP, Spa Duty ODP
- Cast aluminum blower housing, impeller & cover; cast iron flanges (threaded)
- UL & CSA approved motor with permanently sealed ball bearings and Class B rated thermal protection
- Inlet & outlet internal muffling
- Quiet operation within OSHA standards

MOTOR OPTIONS

- International voltage & frequency (Hz)
- Chemical duty, high efficiency, inverter duty or industry-specific designs
- Various horsepower for application-specific needs

BLOWER OPTIONS

- Corrosion resistant surface treatments & sealing options
- Remote drive (motorless) models
- Slip-on or face flanges for application-specific needs

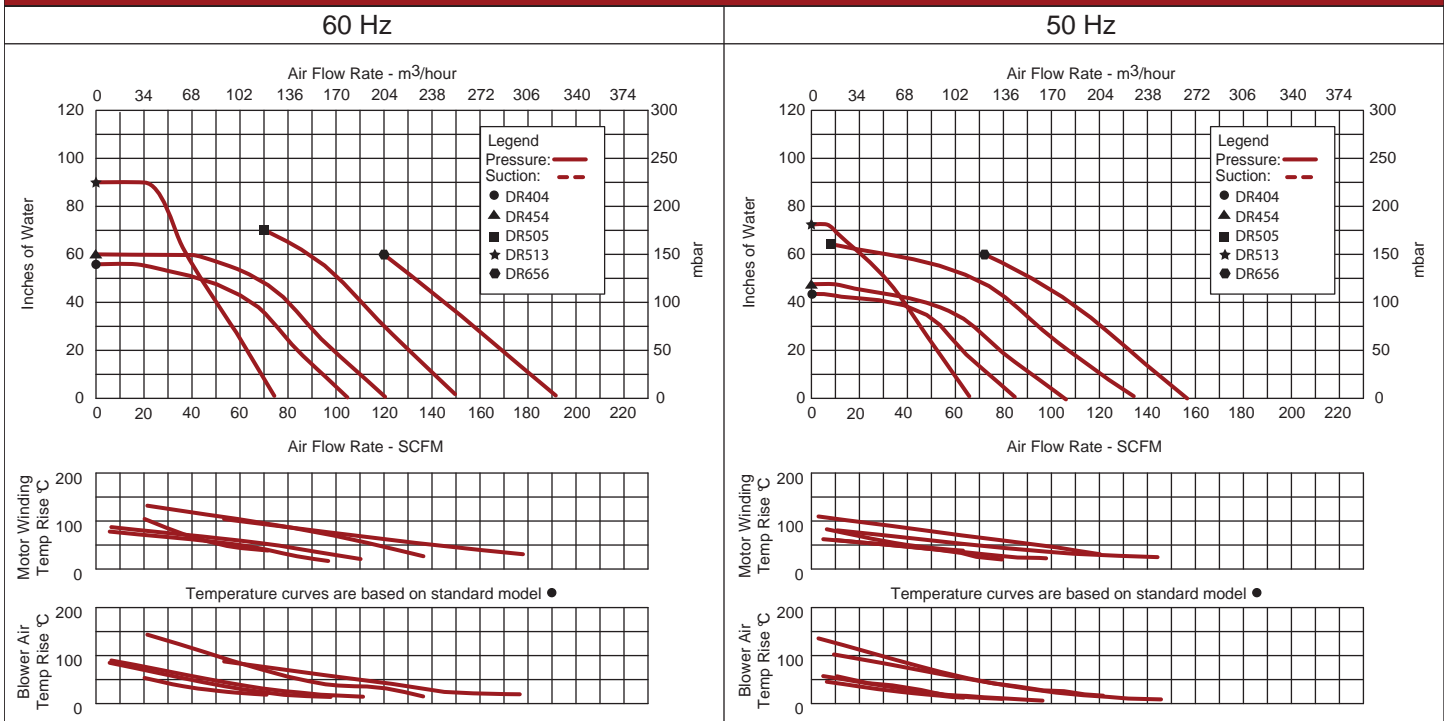
ACCESSORIES

- Flowmeters reading in SCFM
- Filters & moisture separators
- Pressure gauges, vacuum gauges, & relief valves
- Switches - air flow, pressure, vacuum, or temperature
- External mufflers for additional silencing
- Variable frequency drive package



ROTRON®

Blower Performance at Standard Conditions



This document is for informational purposes only and should not be considered as a binding description of the products or their performance in all applications. The performance data on this page depicts typical performance under controlled laboratory conditions. AMETEK is not responsible for blowers driven beyond factory specified speed, temperature, pressure, flow or without proper alignment. Actual performance will vary depending on the operating environment and application. AMETEK products are not designed for and should not be used in medical life support applications. AMETEK reserves the right to revise its products without notification. The above characteristics represent standard products. For product designed to meet specific applications, contact AMETEK Technical & Industrial Products Sales department.

AMETEK TECHNICAL & INDUSTRIAL PRODUCTS

75 North Street, Saugerties, NY 12477

USA: +1 215-256-6601 - Europe: +44 (0) 845 366 9664 - Asia: +86 21 5763 1258

Customer Service Fax: +1 215.256.1338

www.ametektip.com

F 18

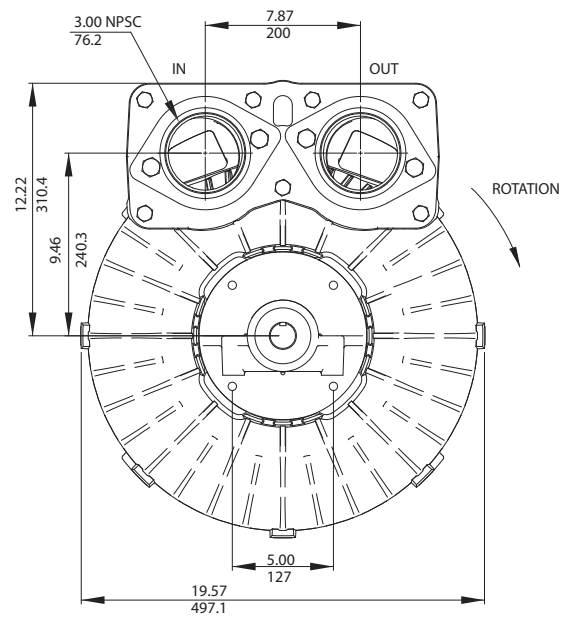
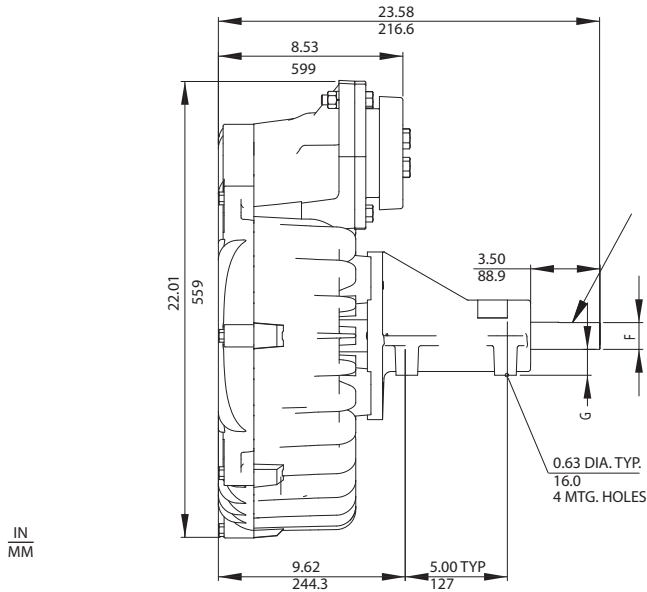
AMETEK®
TECHNICAL & INDUSTRIAL PRODUCTS

Application Specific Blowers

DR 10RDNT/SS10RDNT/HS 10RDNT

Remote Drive (Motorless) Blowers

ROTRON®



- NOTES
 1 DRAWING NOT TO SCALE, CONTACT FACTORY FOR SCALE CAD DRAWING.
 2 CONTACT FACTORY FOR BLOWER MODEL LENGTHS NOT SHOWN.

Specification	Units	Part/Model Number		
		DR10RDNT 036594	SS10RDNT	HS10RDNT
Shaft Material	-	Carbon Steel	Stainless Steel	Hastelloy
Speed Range	-	1750-4500	1750-4500	1750-4500
Housing, Cover, Cover	-	Cast Iron	Cast Iron	Hastelloy
Shipping Weight	Lbs	400	500	600
	Kg	181.4	226.8	272.2

SS= Stainless Steel HS= Hastelloy

- DR10RDNT not recommended for use with explosive gas due to material of construction.
- Maximum operating temperature: Blower outlet air temperature should not exceed 260°C (air temperature rise plus inlet temperature). Contact factory for use above 260°C blower outlet air temperature.
- AMETEK will not be liable for blowers operated beyond factory specified RPM.
- All applications must be reviewed. Contact application engineering for assistance.

This document is for informational purposes only and should not be considered as a binding description of the products or their performance in all applications. The performance data on this page depicts typical performance under controlled laboratory conditions. AMETEK is not responsible for blowers driven beyond factory specified speed, temperature, pressure, flow or without proper alignment. Actual performance will vary depending on the operating environment and application. AMETEK products are not designed for and should not be used in medical life support applications. AMETEK reserves the right to revise its products without notification. The above characteristics represent standard products. For product designed to meet specific applications, contact AMETEK Technical & Industrial Products Sales department.

AMETEK TECHNICAL & INDUSTRIAL PRODUCTS
 75 North Street, Saugerties, NY 12477
 USA: +1 215-256-6601 - Europe: +44 (0) 845 366 9664 - Asia: +86 21 5763 1258
 Customer Service Fax: +1 215.256.1338
www.ametektip.com

Application Specific Blowers

DR 10RDNT/SS10RDNT/HS 10RDNT

Remote Drive (Motorless) Blowers

FEATURES

- Manufactured in the USA - ISO 9001 and NAFTA compliant
- CE compliant - Declaration of Conformity on file

BLOWER OPTIONS

- Corrosion resistant surface treatments & sealing options
- Slip-on or face flanges for application-specific needs
- Packaged on baseplate with V-belts or coupling, guard & motor
- High temperature Viton® seals
- Krytox® grease high temperature bearings

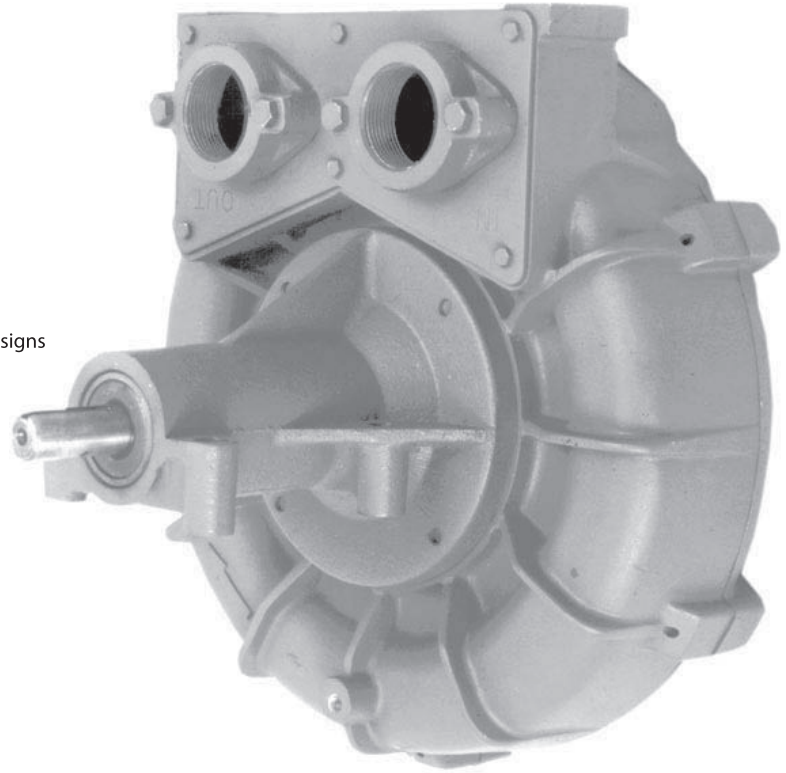
PACKAGE/MOTOR OPTIONS

- International voltage & frequency (Hz)
- Chemical duty, high efficiency, inverter duty or industry-specific designs
- Various horsepower for application-specific needs
- Packing gland or double faced seal options

ACCESSORIES

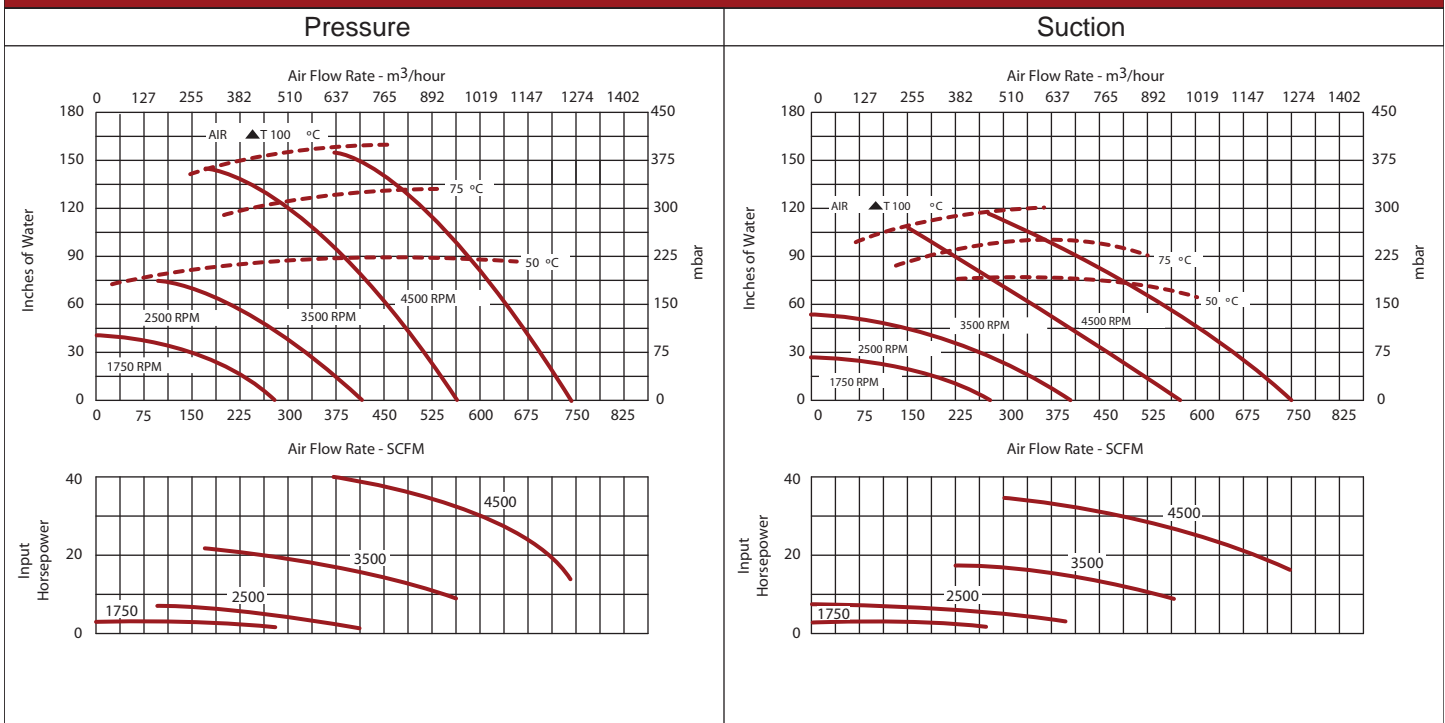
- Flowmeters reading in SCFM
- Filters & moisture separators
- Pressure gauges, vacuum gauges, & relief valves
- Switches - air flow, pressure, vacuum, or temperature
- External mufflers for additional silencing
- Variable frequency drive package

Note: For accessories, special high temperature models may be required



ROTRON®

Blower Performance at Standard Conditions



This document is for informational purposes only and should not be considered as a binding description of the products or their performance in all applications. The performance data on this page depicts typical performance under controlled laboratory conditions. AMETEK is not responsible for blowers driven beyond factory specified speed, temperature, pressure, flow or without proper alignment. Actual performance will vary depending on the operating environment and application. AMETEK products are not designed for and should not be used in medical life support applications. AMETEK reserves the right to revise its products without notification. The above characteristics represent standard products. For product designed to meet specific applications, contact AMETEK Technical & Industrial Products Sales department.

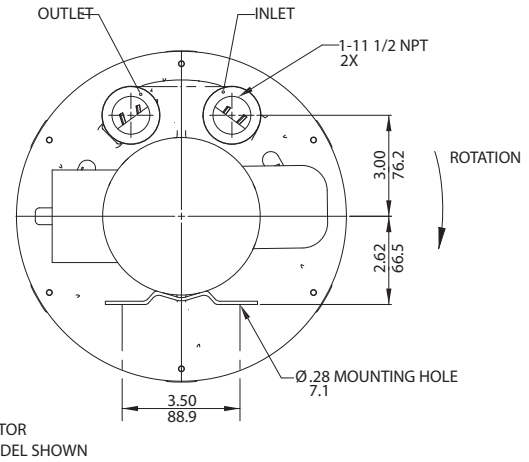
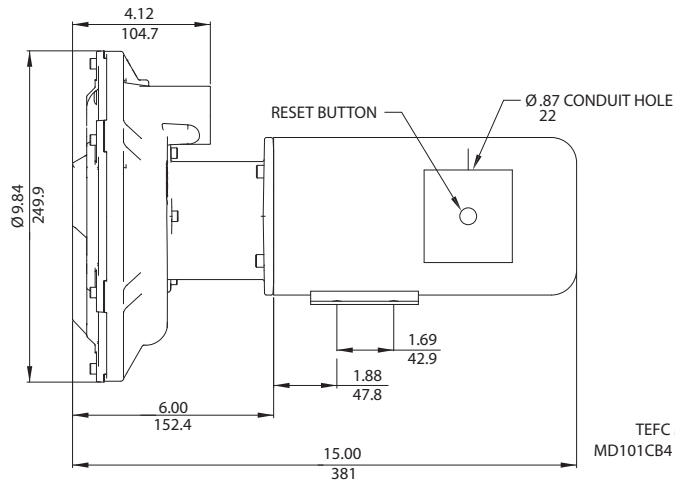
AMETEK TECHNICAL & INDUSTRIAL PRODUCTS
 75 North Street, Saugerties, NY 12477
 USA: +1 215-256-6601 - Europe: +44 (0) 845 366 9664 - Asia: +86 21 5763 1258
 Customer Service Fax: +1 215.256.1338
www.ametektip.com

Application Specific Blowers

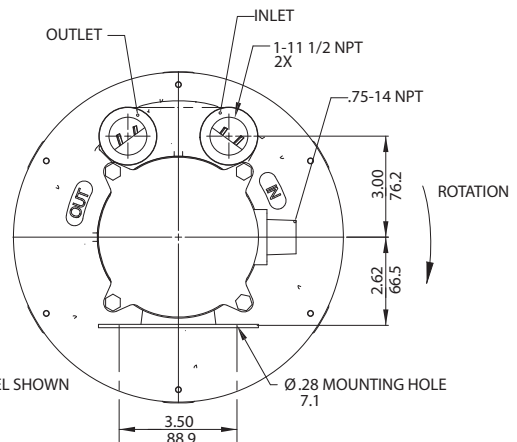
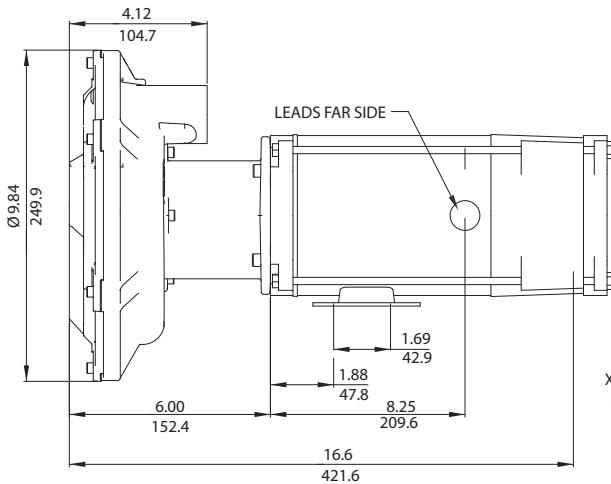
MD 101 Magnetic-Drive

Regenerative Blower

ROTRON®



TEFC MOTOR
MD101CB4 MODEL SHOWN



XP MOTOR
MD101CC4 MODEL SHOWN

NOTES

- 1 DRAWING NOT TO SCALE, CONTACT FACTORY FOR SCALE CAD DRAWING.
- 2 CONTACT FACTORY FOR BLOWER MODEL LENGTHS NOT SHOWN.

Specification	Units	Part/Model Number	
		MD101CB4	MD101CC4
		038014	038271
Motor Enclosure - Shaft Mtl.	-	TEFC	Explosion-proof
Horsepower	-	.25	.25
Phase - Frequency	-	Single-60 hz	Single-60 hz
Voltage	AC	115	115
Motor Nameplate Amps	Amps (A)	2.6	2.6
Max. Blower Amps	Amps (A)	2.2	2.2
Inrush Amps	Amps (A)	6.4	7.2
Service Factor	-	1.0	1.0
Starter Size	-	00	00
Thermal Protection	-	Class B - Automatic, Manual Reset	Class B - Automatic
XP Motor Class - Group	-	-	I-D
Shipping Weight	Lbs	40	40
	Kg	18.1	18.1

¹ Maximum operating temperature: Motor winding temperature (winding rise plus ambient) should not exceed 140°C for Class F rated motors or 120°C for Class B rated motors. Blower outlet air temperature should not exceed 140°C (air temperature rise plus inlet temperature). Performance curve maximum pressure and suction points are based on a 40°C inlet and ambient temperature. Consult factory for inlet or ambient temperatures above 40°C.

This document is for informational purposes only and should not be considered as a binding description of the products or their performance in all applications. The performance data on this page depicts typical performance under controlled laboratory conditions. AMETEK is not responsible for blowers driven beyond factory specified speed, temperature, pressure, flow or without proper alignment. Actual performance will vary depending on the operating environment and application. AMETEK products are not designed for and should not be used in medical life support applications. AMETEK reserves the right to revise its products without notification. The above characteristics represent standard products. For product designed to meet specific applications, contact AMETEK Technical & Industrial Products Sales department.

AMETEK TECHNICAL & INDUSTRIAL PRODUCTS
75 North Street, Saugerties, NY 12477
USA: +1 215-256-6601 - Europe: +44 (0) 845 366 9664 - Asia: +86 21 5763 1258
Customer Service Fax: +1 215.256.1338
www.ametektip.com

FEATURES

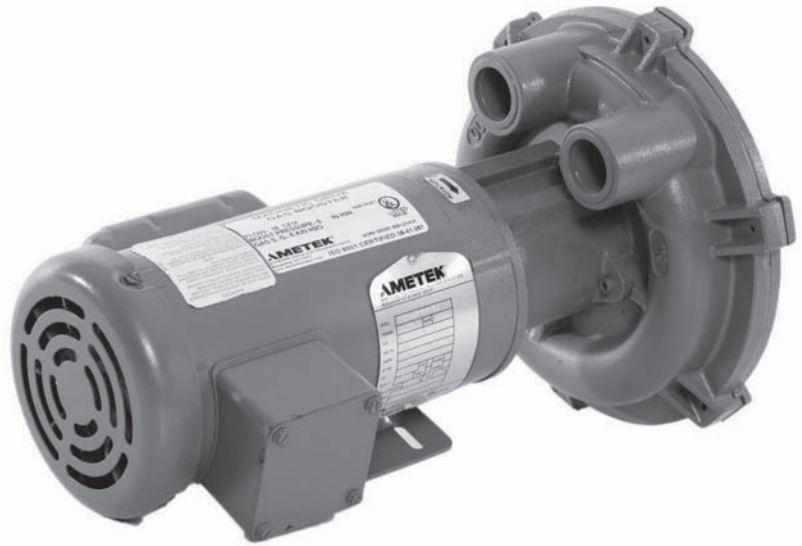
- Hermetically designed seal-less blower
- Continuous operation
- Manufactured in the USA
- Maximum flow: 27 SCFM
- Maximum pressure: 28 IWG
- Maximum vacuum: 26.5 IWG
- Standard motor: 0.25 HP, TEFC or XP
- Disconnect motor without disassembling from piping
- Cast aluminum blower housing, impeller & flanges
- Permanently sealed ball bearings in housing and motor
- Quiet operation within OSHA standards
- Contact factory for leakage specifications

BLOWER OPTIONS

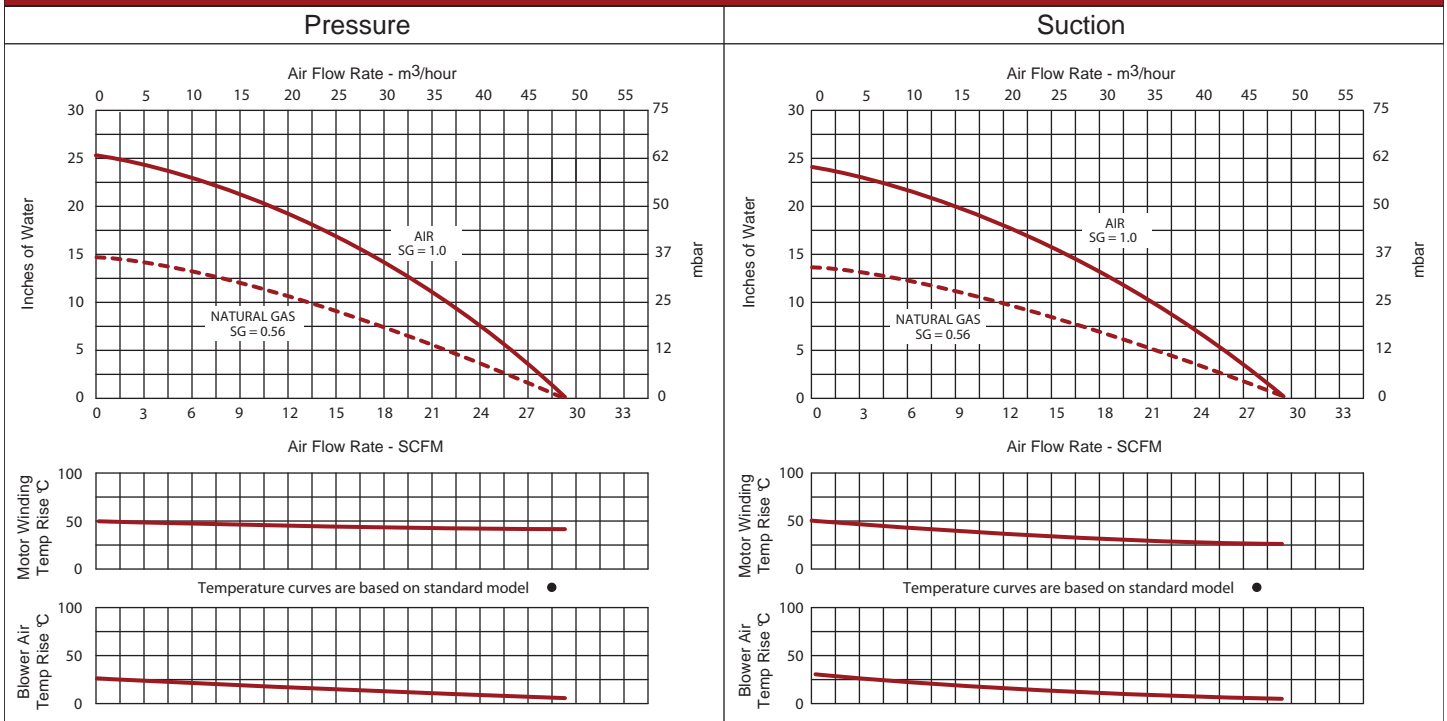
- Corrosion resistant surface treatments & sealing options

ACCESSORIES

- Flowmeters reading in SCFM
- Filters & moisture separators
- Pressure gauges, vacuum gauges, & relief valves
- External mufflers for additional silencing

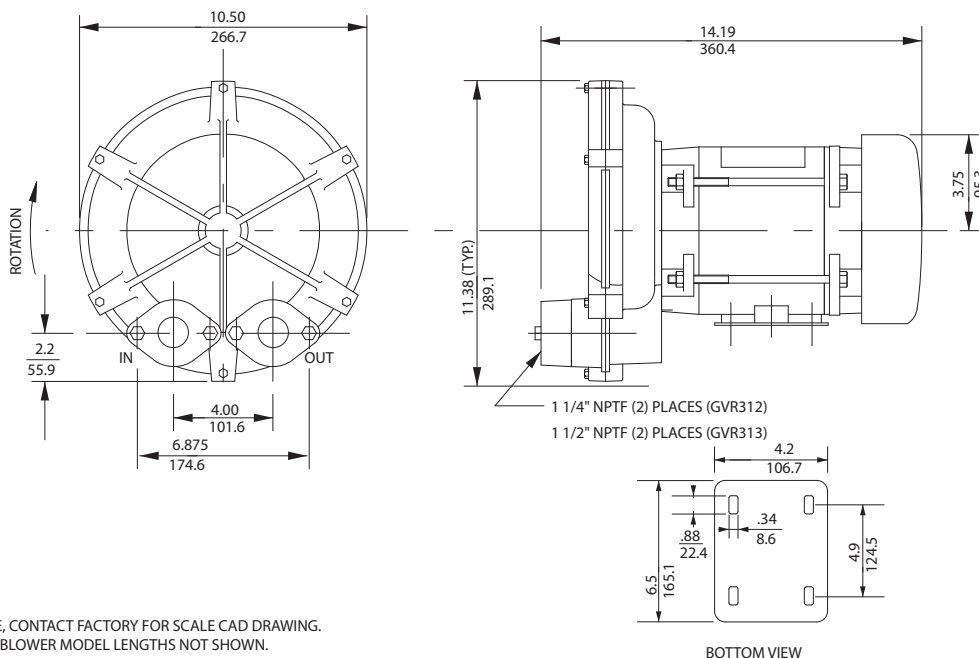


Blower Performance at Standard Conditions



This document is for informational purposes only and should not be considered as a binding description of the products or their performance in all applications. The performance data on this page depicts typical performance under controlled laboratory conditions. AMETEK is not responsible for blowers driven beyond factory specified speed, temperature, pressure, flow or without proper alignment. Actual performance will vary depending on the operating environment and application. AMETEK products are not designed for and should not be used in medical life support applications. AMETEK reserves the right to revise its products without notification. The above characteristics represent standard products. For product designed to meet specific applications, contact AMETEK Technical & Industrial Products Sales department.

Regenerative Blower



IN
MM

NOTES

- 1 DRAWING NOT TO SCALE, CONTACT FACTORY FOR SCALE CAD DRAWING.
- 2 CONTACT FACTORY FOR BLOWER MODEL LENGTHS NOT SHOWN.
- 3 GVR313AK4H MODELS SHOWN

Specification	Units	Part/Model Number				
		GVR313AK4H 038584	GVR313AK58H 081531	GVR313AK72HA 081470	GVR313AK91H 081524	GVR313AE4HA 080274
Motor Enclosure - Shaft Mtl.	-	Explosion-proof - CS	Explosion proof - CS	Explosion proof - CS	ATEX - CS	TEFC
Horsepower	-	0.5	0.5	0.5	0.75	0.5
Phase - Frequency	-	Single-60 hz	Single-50/60 Hz	Three-60 Hz	Three-50 Hz	Single-60 Hz
Voltage	AC	115	110/220	230/460	400	115
Motor Nameplate Amps	Amps (A)	9.4	8.4/4.2	1.4/0.7	1.4	7.4
Max. Blower Amps	Amps (A)	7.6	6.8/3.4	1.4/0.7	1.1	7.4
Inrush Amps	Amps (A)	45	45	10.2/5.1	9	47
Service Factor	-	1.0	1.0	1.15	1.0	1.0
Starter Size	-	0	0	00	0	0
Thermal Protection	-	Class B - Automatic	Class B - Automatic	Class B - Automatic	Thermistors	Class B - Automatic
XP Motor Class - Group	-	I-D	1-D	1-D	EExd IIB	1-D
Shipping Weight	Lbs	39	39	39	45	39
	Kg	17.7	17.7	17.7	20.4	17.7

- 1 115 voltage, 1 phase motors are standard. 230 volt motors available. As an option, a transformer could be used.
- 2 Maximum operating temperature: Motor winding temperature (winding rise plus ambient) should not exceed 140°C for Class F rated motors or 120°C for Class B rated motors. Blower outlet air temperature should not exceed 140°C (air temperature rise plus inlet temperature). Performance curve maximum pressure and suction points are based on a 40°C inlet and ambient temperature. Consult factory for inlet or ambient temperatures above 40°C.
- 3 Maximum blower amps corresponds to the performance point at which the motor or blower temperature rise with a 40°C inlet and/or ambient temperature reaches the maximum operating temperature.

This document is for informational purposes only and should not be considered as a binding description of the products or their performance in all applications. The performance data on this page depicts typical performance under controlled laboratory conditions. AMETEK is not responsible for blowers driven beyond factory specified speed, temperature, pressure, flow or without proper alignment. Actual performance will vary depending on the operating environment and application. AMETEK products are not designed for and should not be used in medical life support applications. AMETEK reserves the right to revise its products without notification. The above characteristics represent standard products. For product designed to meet specific applications, contact AMETEK Technical & Industrial Products Sales department.

FEATURES

- Manufactured in the USA
- Maximum flow: 52 SCFM
- Maximum pressure 45 IWG
- Maximum vacuum: 40.8 IWG
- Standard motor: 0.5 HP, TEFC
- Anodized cast aluminum blower housing, impeller & cover
- Sealed by single face seal on shaft along with O-ringed flanges and cover
- Quiet operation within OSHA standard
- ROHS gold irridite coatings on aluminum surfaces

MOTOR OPTIONS

- International voltage & frequency (Hz)
- Chemical duty, high efficiency, inverter duty or industry-specific designs
- Various horsepower for application-specific needs

BLOWER OPTIONS

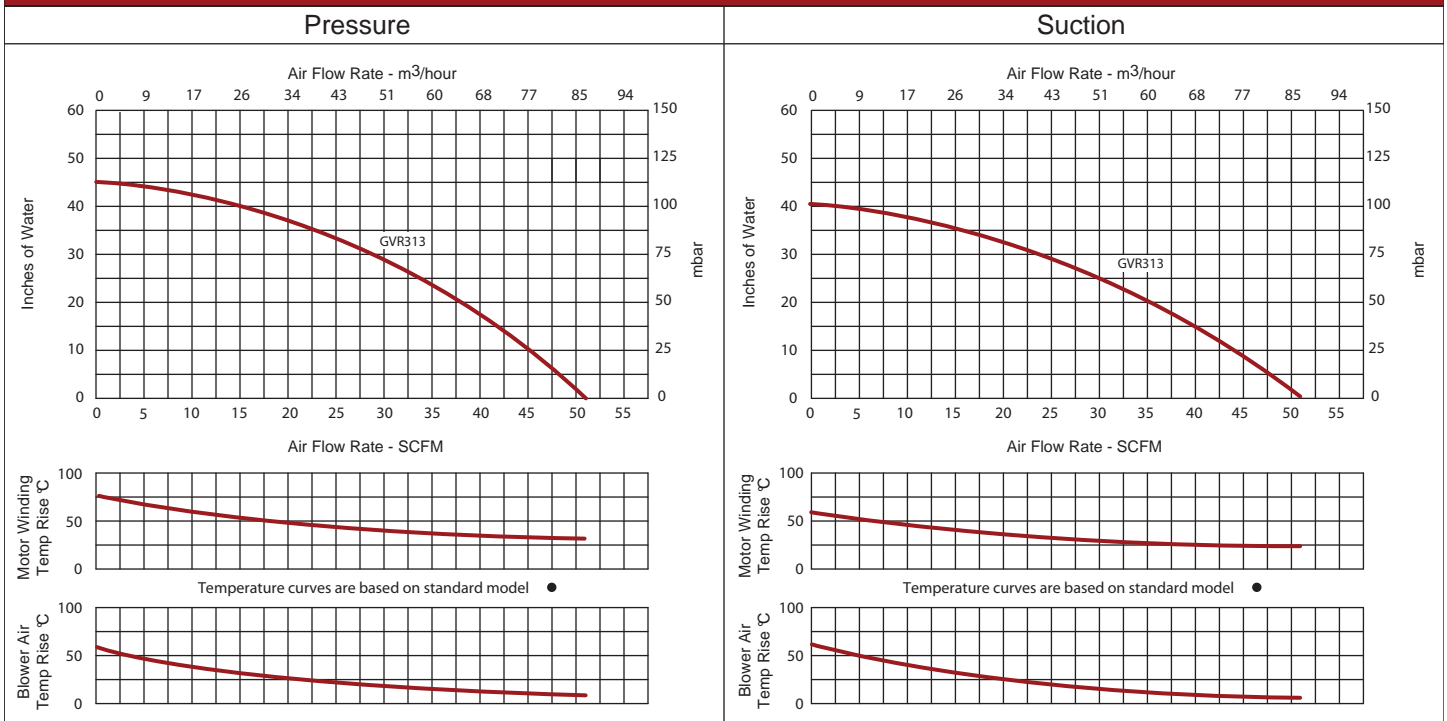
- Slip-on or face flanges for application-specific needs

ACCESSORIES

- Flowmeters reading in SCFM
- Filters & moisture separators
- Pressure gauges, vacuum gauges, & relief valves
- Switches - air flow, pressure, vacuum, or temperature
- External mufflers for additional silencing



Blower Performance at Standard Conditions



This document is for informational purposes only and should not be considered as a binding description of the products or their performance in all applications. The performance data on this page depicts typical performance under controlled laboratory conditions. AMETEK is not responsible for blowers driven beyond factory specified speed, temperature, pressure, flow or without proper alignment. Actual performance will vary depending on the operating environment and application. AMETEK products are not designed for and should not be used in medical life support applications. AMETEK reserves the right to revise its products without notification. The above characteristics represent standard products. For product designed to meet specific applications, contact AMETEK Technical & Industrial Products Sales department.